

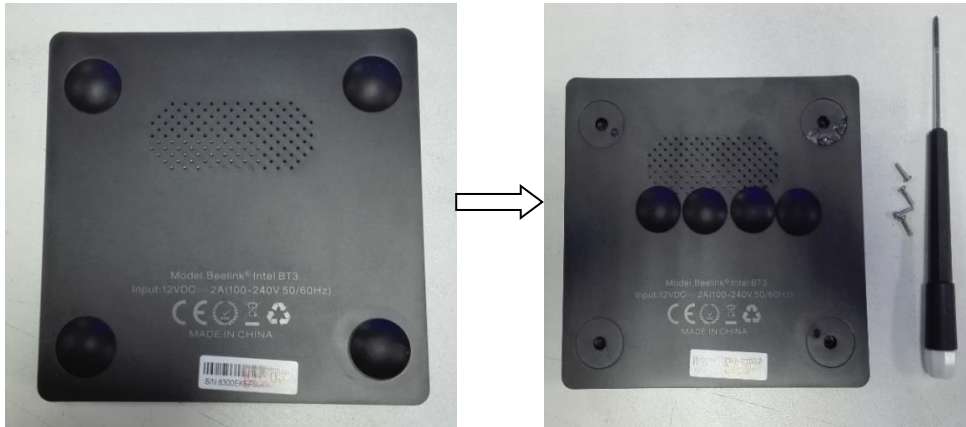
# BT3 Troubleshooting

**Malfunction as Follow :**

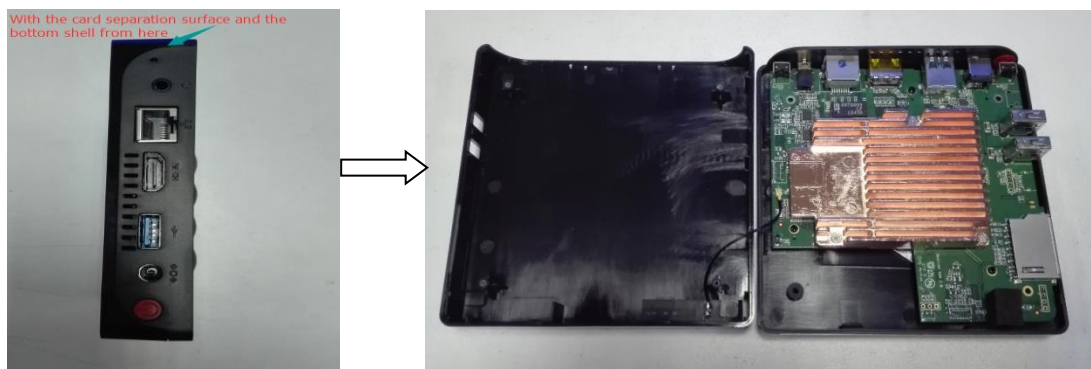


## Action :

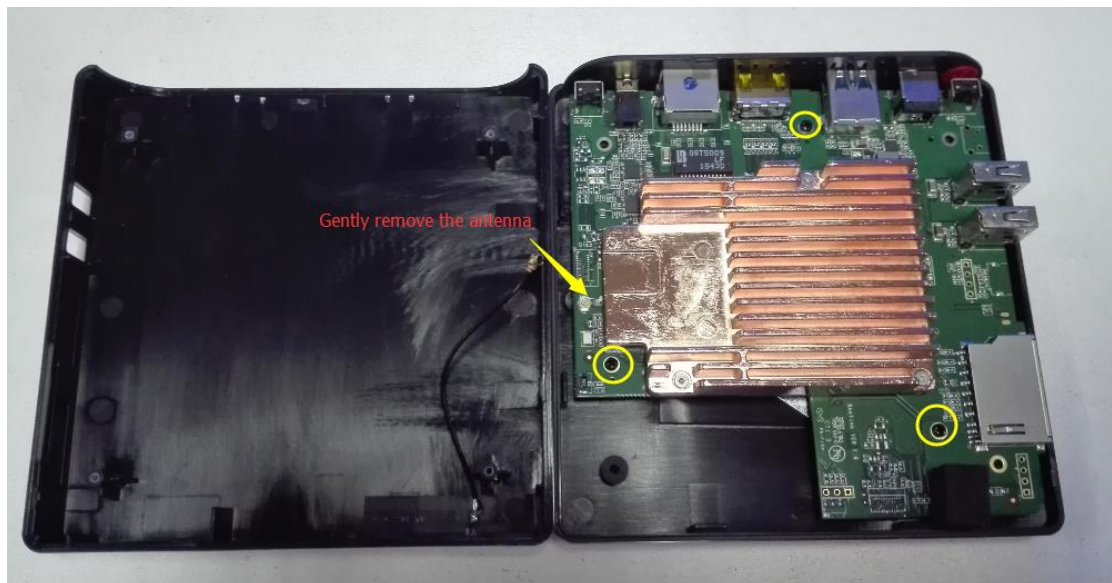
1. Remove the gasket and remove the screw with a screwdriver



- 2, with the card surface and the bottom shell separation



3、 Gently remove the antenna and snap motherboard screws





4、 Remove the battery snap and plug in the power

**Note** : plug in the power sustained light lamp for 5 seconds, then go off, this is normal!



5、 Unplug the power and plug in the battery



6、 Install the motherboard and screws , and so on !

DONE !