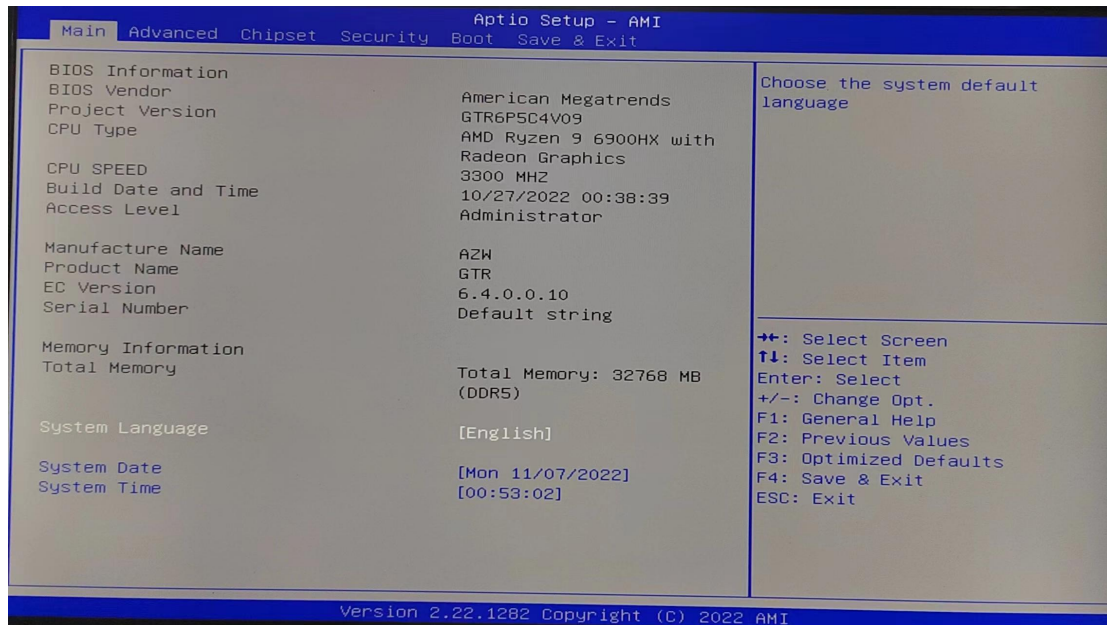
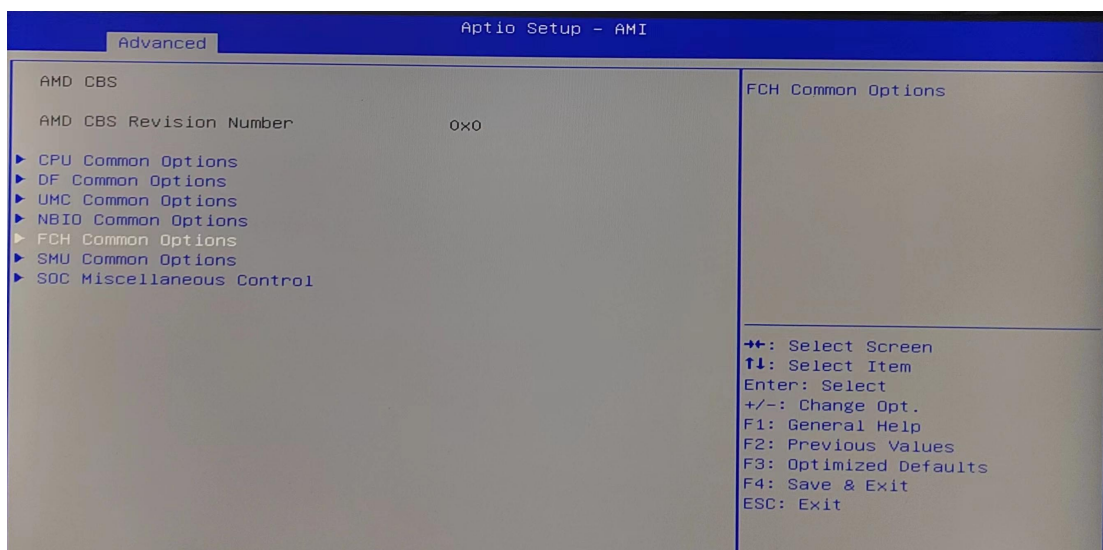


GTR6900 Auto power on tutorial

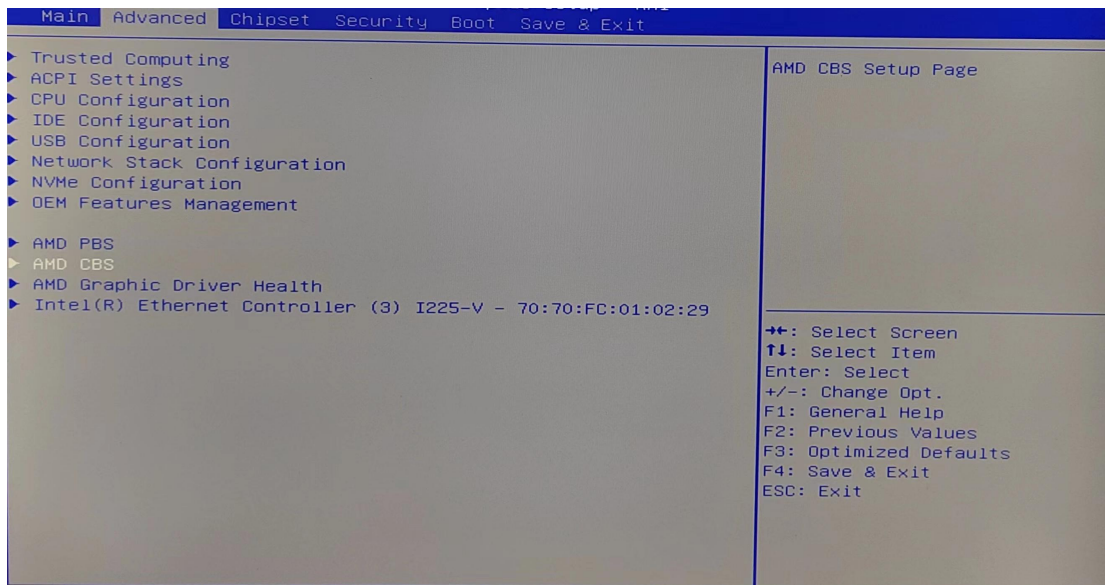
1. When booting up, press the keyboard delete repeatedly, enter the BIOS



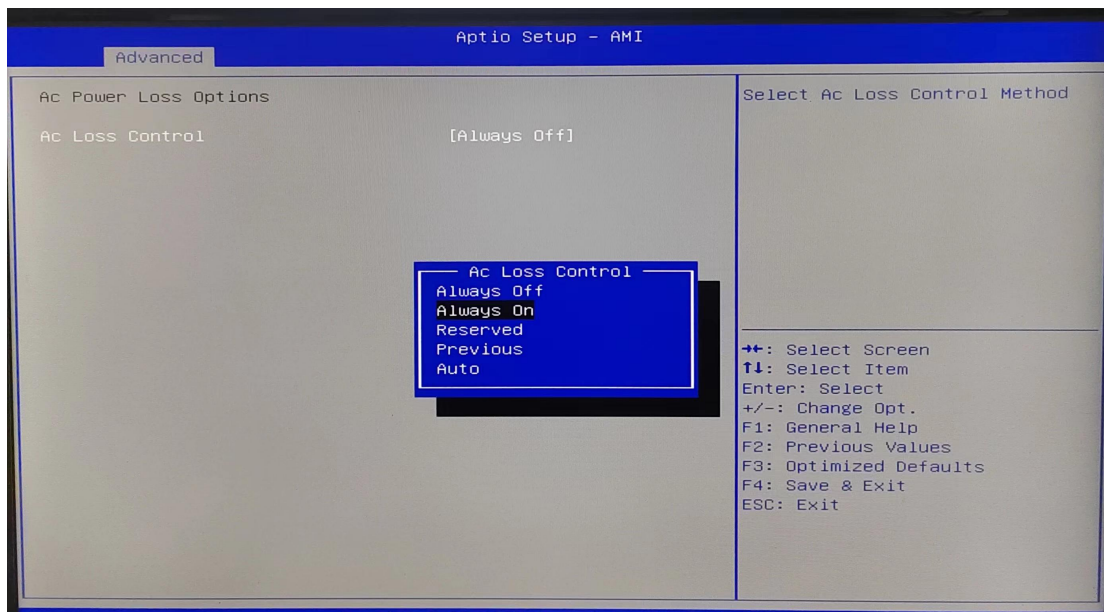
2. Enter the "Advance" interface and select "FCH Common Options"



3. Choose "AMD CBS"



4. Set AC Loss Control to "Always on"



5. Press F4 to select Yes to save the settings and exit, it will automatically restart and enter the system, complete!