

Beelink P2 Driver Installation tutorials

Step1. Downloading the driver

<https://mega.nz/#F!c1dHSBgK> keys: !Kh7Xnc5o0u9kFaEkNXGvRw

Step2. Open the downloaded the folder "Beelink P2 Driver Download"



Step3. The drivers are copied in "windows C:"

Step4. Please check your device's "Wifi chip" , Is "Broadcom chip"? Or "Realtek chip"?

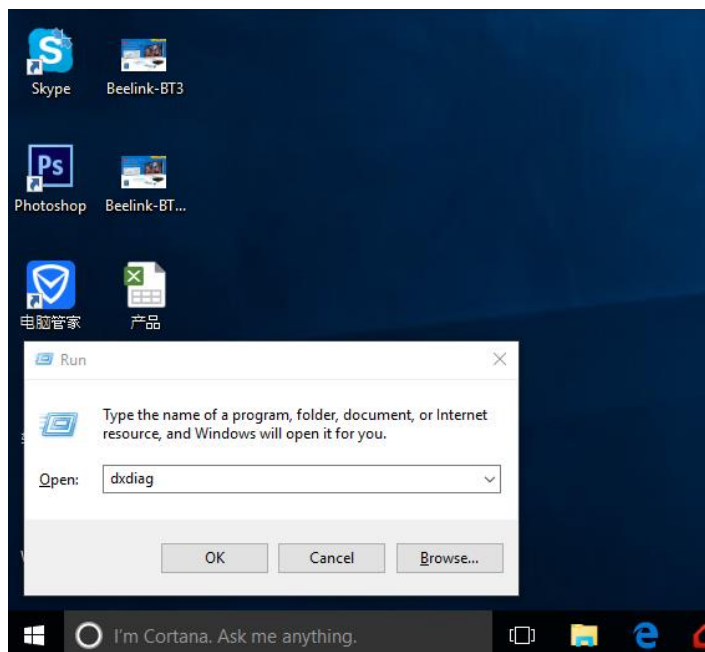
And finally select the corresponding driver installation

Step5. Check your device's WIFI chip

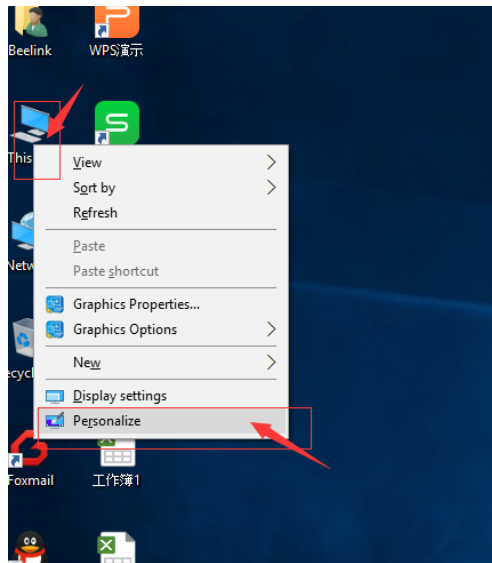
The first method:

Keyboard: [win]+[R] Input "dxdiag" ,

You can view the system configuration

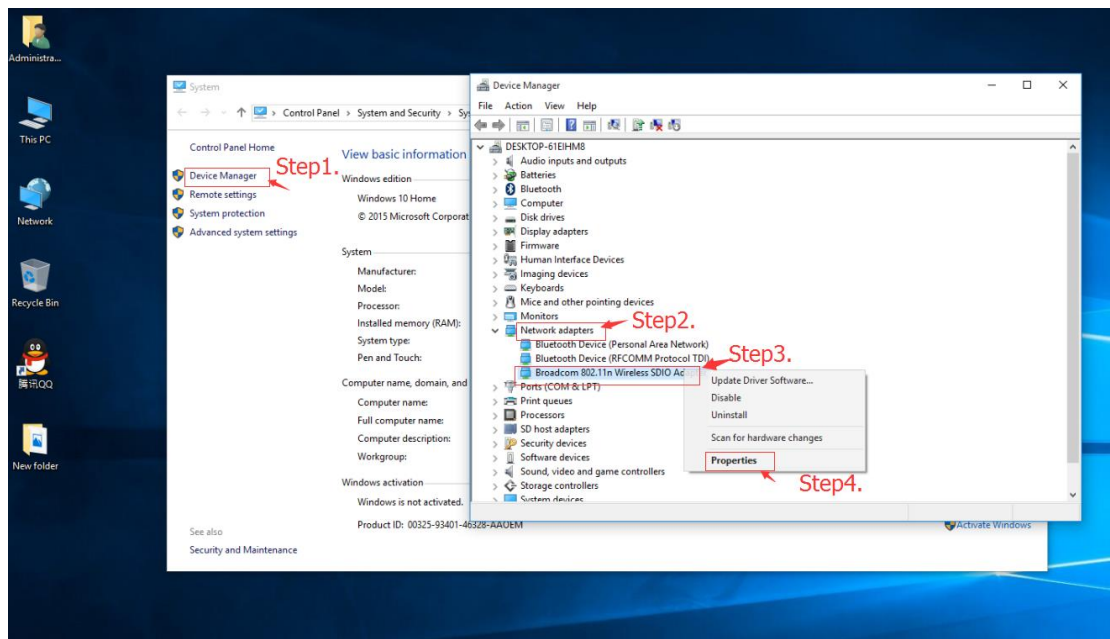


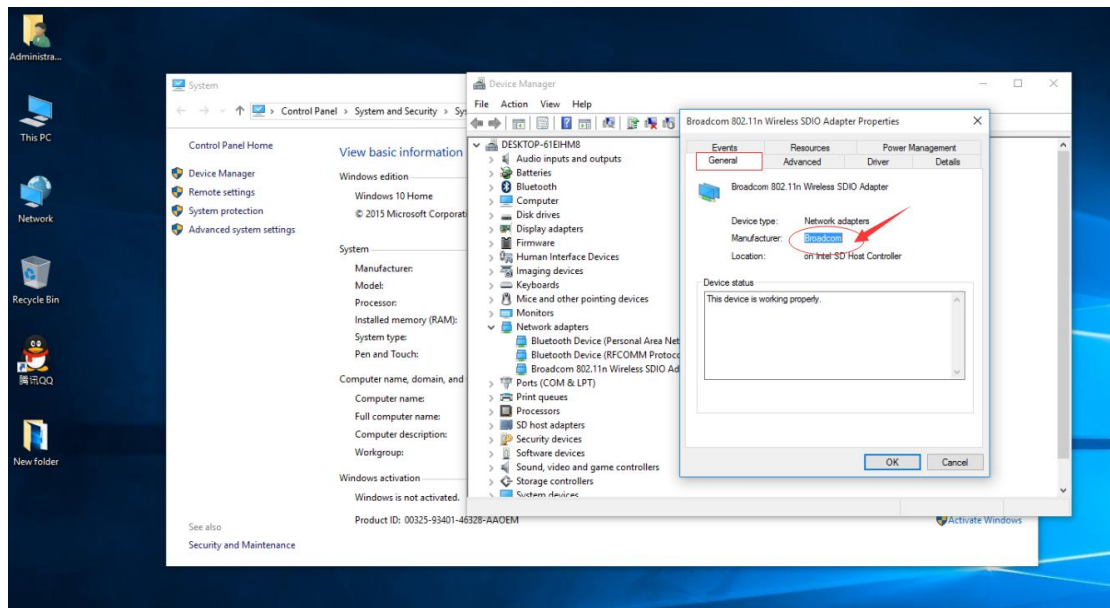
The second method:



Step5.1 Click on the desktop "This PC" , The

right mouse button "Personalize"





Step5.2

1. Click the "Device Manager"
2. Click the "Network adapters", The right mouse button select " Properties "

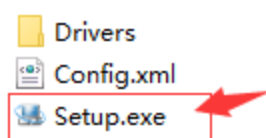
Driver Installation Guide

- Beelink P2 Broadcom Win10
- Beelink P2 Realtek Win10

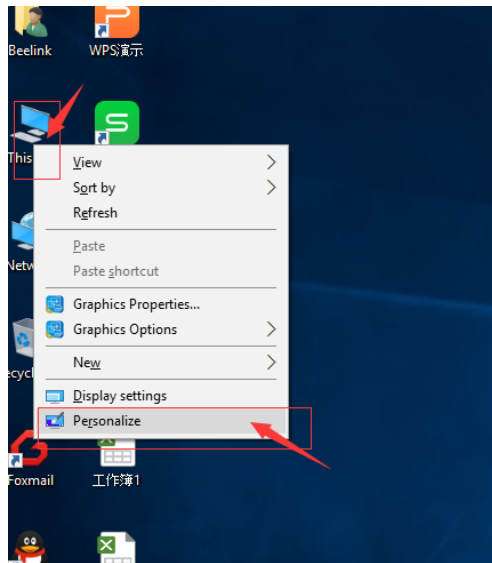
Beelink P2 Broadcom Win10 Driver Installation Guide

*Step1. Driver Installation

Click the “Beelink P2 Driver Download\Beelink P2 Broadcom Win10\Installer\PlatformInstaller”,
Select Click "Setup.exe" installation.

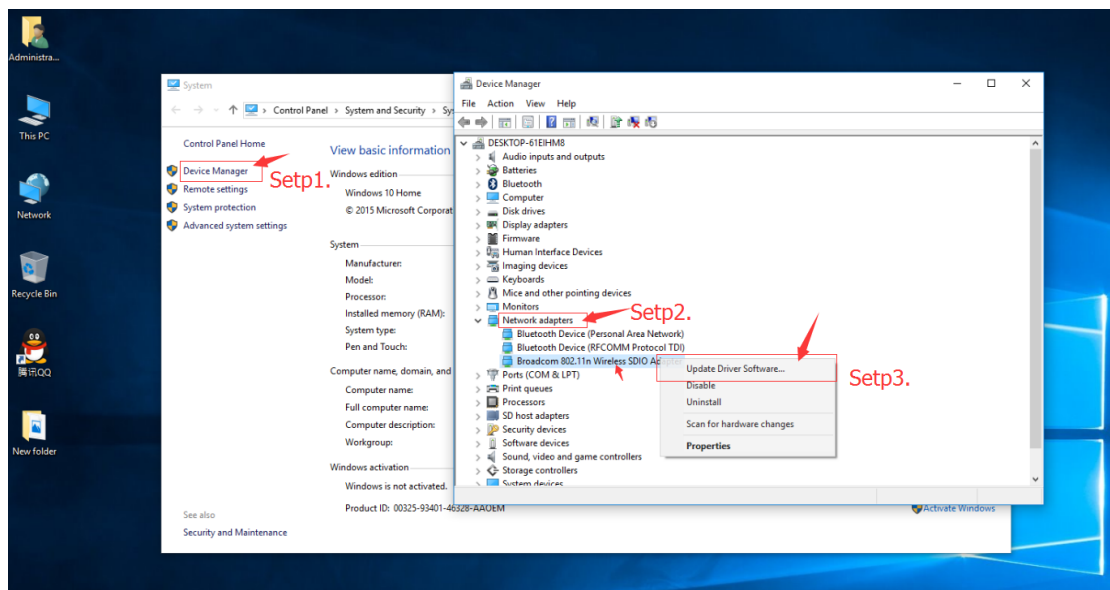


*Step2. Manual update Driver Installation



Step2.1 Click on the desktop "This PC" , The

right mouse button "Personalize"



Step2.2

3. Click the "Device Manager"

4. You need to manually select the updated drivers , Such as: "Network adapters" ,

The right mouse button select "Update"

5. Select the downloaded drivers the folder " Beelink P2 Broadcom

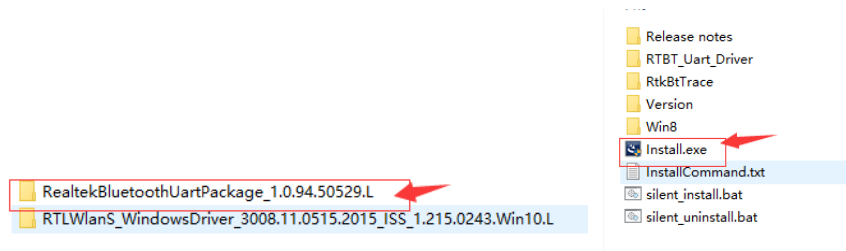
Win10\Installer\Platform\Installer\Drivers " , Click the "OK", and finally click "Next" .

Beelink P2 Realtek Win10 Driver Installation Guide

Bluetooth

*Step1. Driver Installation

Click the “Beelink P2 Realtek Win10\RealtekBluetoothUartPackage_1.0.94.50529.L”



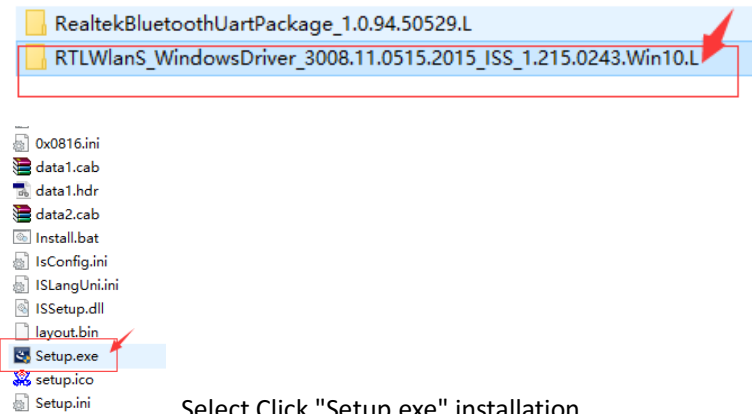
Select Click "Install.exe" installation.

Wifi

*Step2. Driver Installation

Click the “Beelink P2 Realtek Win10\

RTLWlanS_WindowsDriver_3008.11.0515.2015_ISS_1.215.0243.Win10.L”



Select Click "Setup.exe" installation.

Manual update Driver Installation , Reference Material

Beelink P2 Broadcom Win10 Driver Installation Guide /*Step2. Manual update Driver

Installation