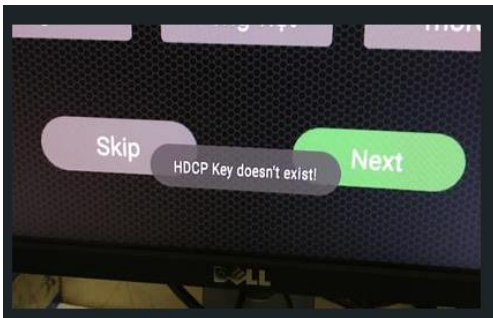


SEA I firmware update step,DHCP key update



Explanation:

If your system is missing "DHCP KEY", Update the DHCP key as follows.

1. File preparation:

- 1.1 Update the firmware and HDCP key tools,
- 1.2 HDCP.BIN
- 1.3 SEAI_102M0_16G_20170321 Latest firmware

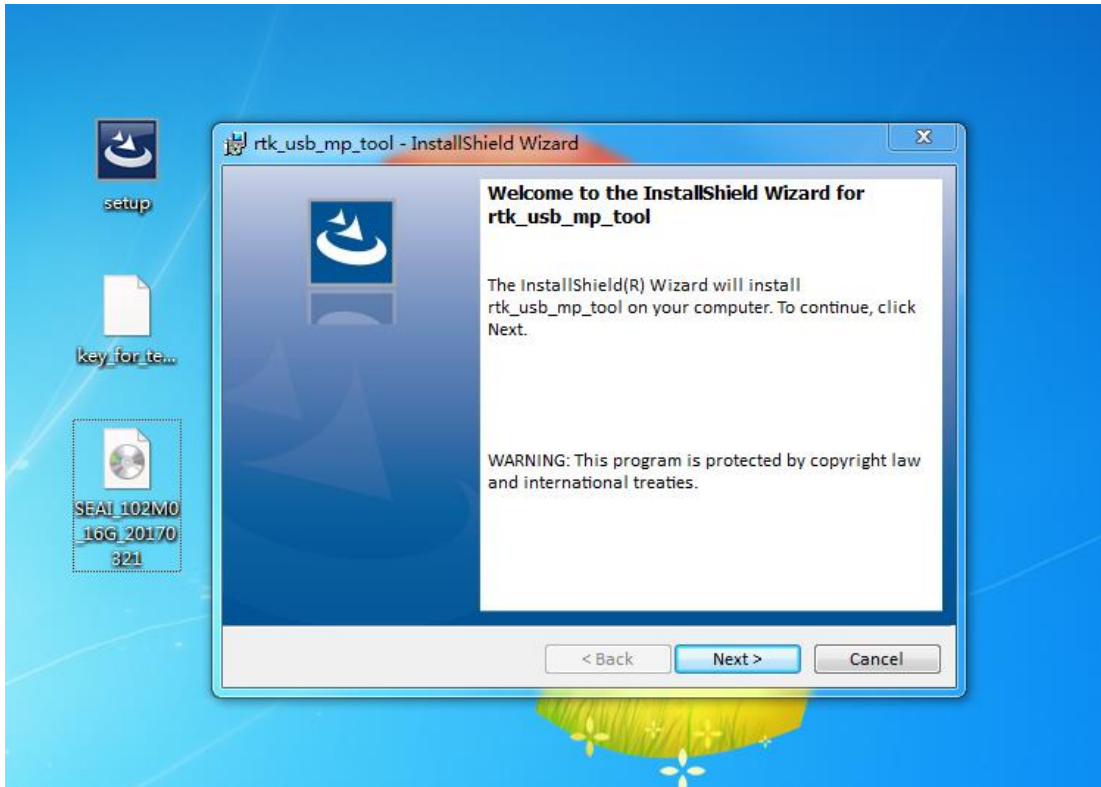
2. Need to prepare a double-headed USB data cable.

Instructions for use: One end plugs into the computer USB port, The other end ,
Insert USB cable to Beelink SEA I "USB 3.0" port on board.

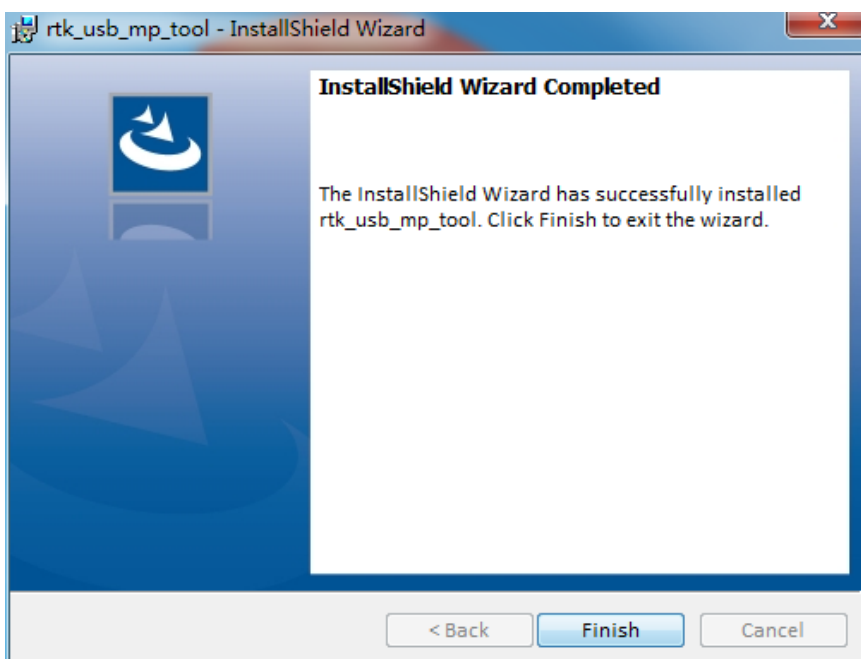


3. Select the software(Update the firmware and HDCP key tools),

Click the Install Firmware Update Tool

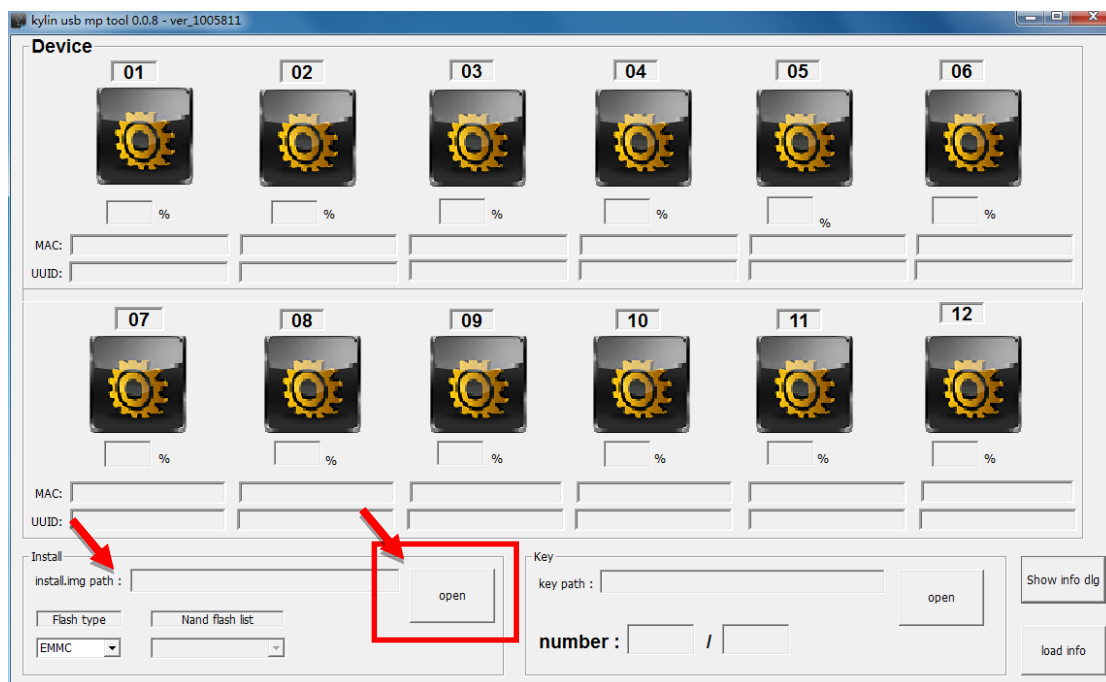


4. Click Next to install



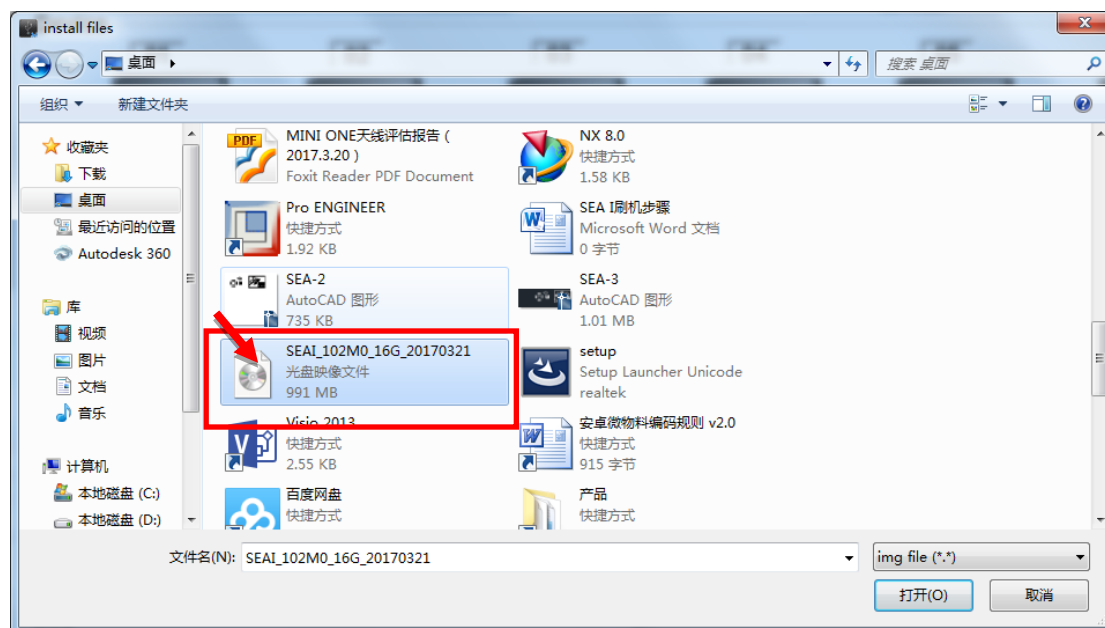
5. Click to finish

6. Open the firmware software tools, as shown below

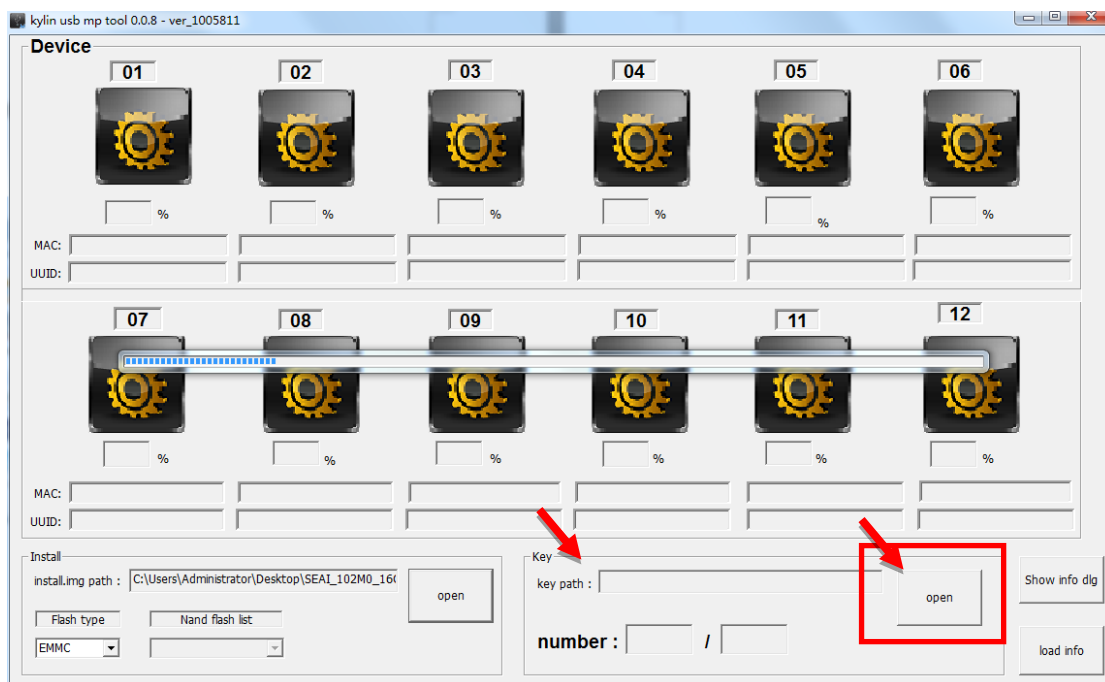


7. Select the “instal” window and click the “OPEN”button,

Select the latest firmware(SEAI_102M0_16G_20170321), And open it

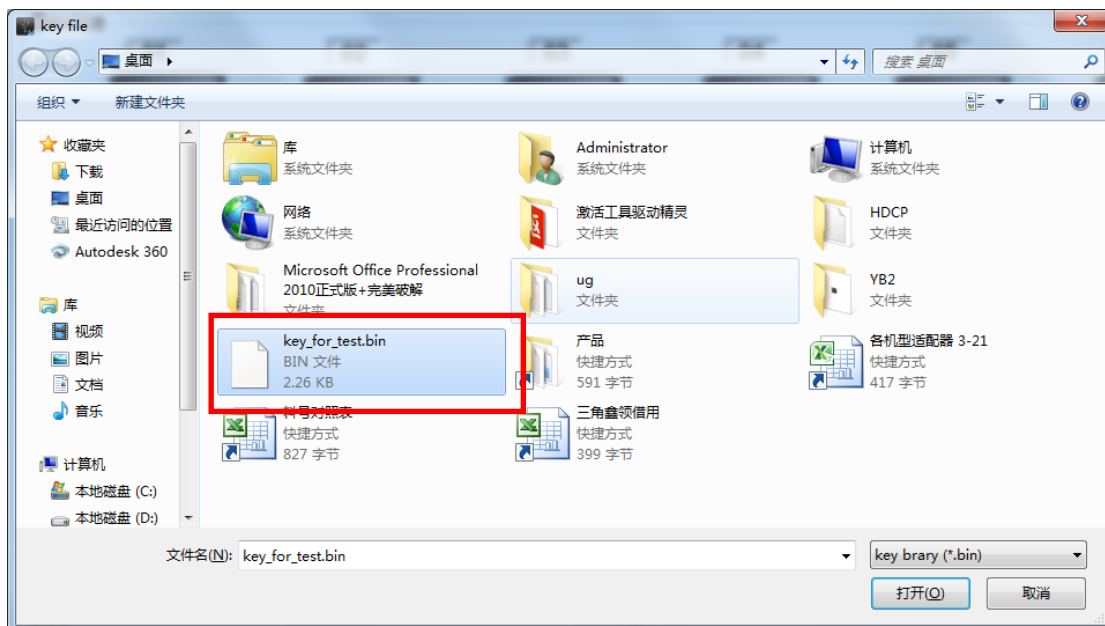


8. Firmware loading.....

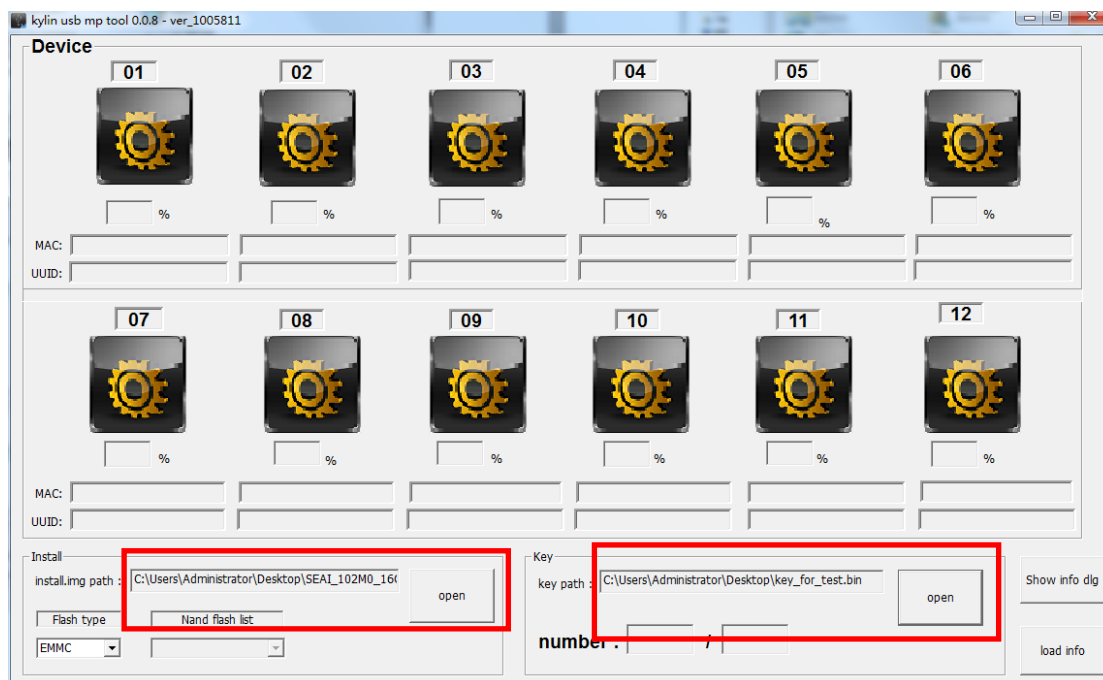


9. Select the “KEY” window and click the “OPEN”button,

Load the “HDCP.BIN” file



10. as the picture shows, Firmware and HDCP, are finished loading



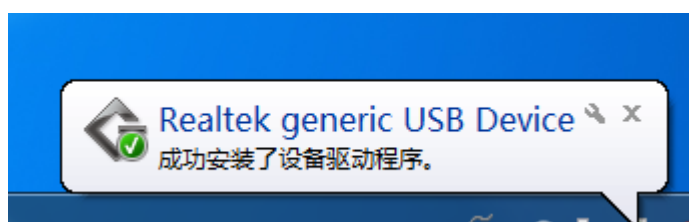
11. Drive the installation,(Windows system automatically installed)

1. double-headed USB data cable.

Instructions for use: One end plugs into the computer USB port, The other end , Insert USB cable to Beelink SEA I 'USB 3.0' port on board.

2. Beelink SEA I Connect the power adapter

3. as the picture shows: After a successful installation, you need to unplug "Beelink SEA I" USB cable and power adapter



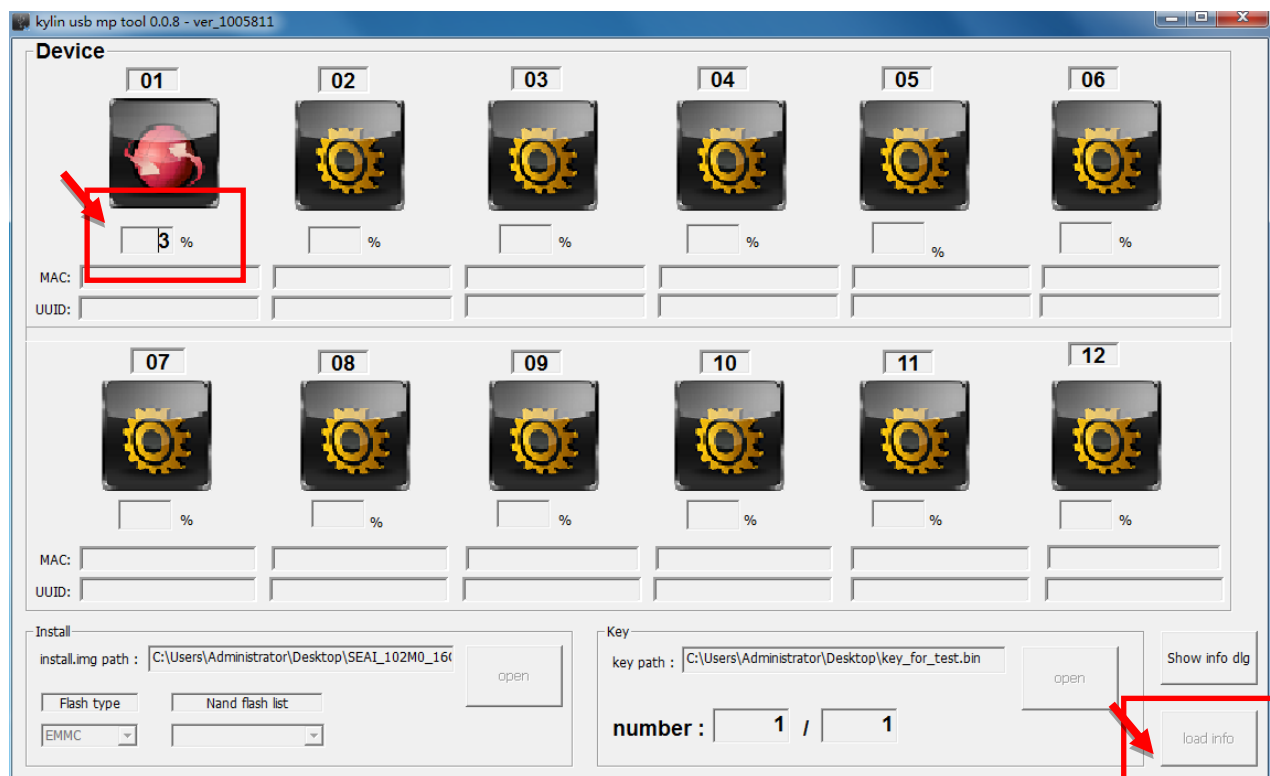
Start updating the firmware

1. double-headed USB data cable.

Instructions for use: One end plugs into the computer USB port, The other end , Insert USB cable to Beelink SEA I 'USB 3.0' port on board.

2. Beelink SEA I Connect the power adapter

3. Start updating firmware until 100%



14. Prompt content, as shown, Update the firmware is complete, Unplug the power and the USB cable.

