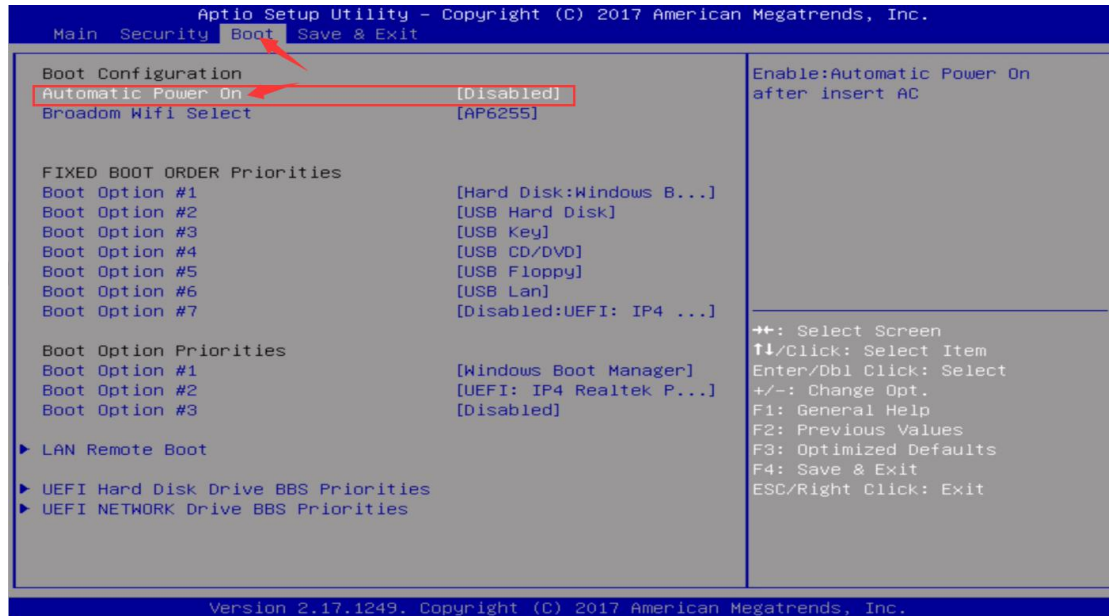
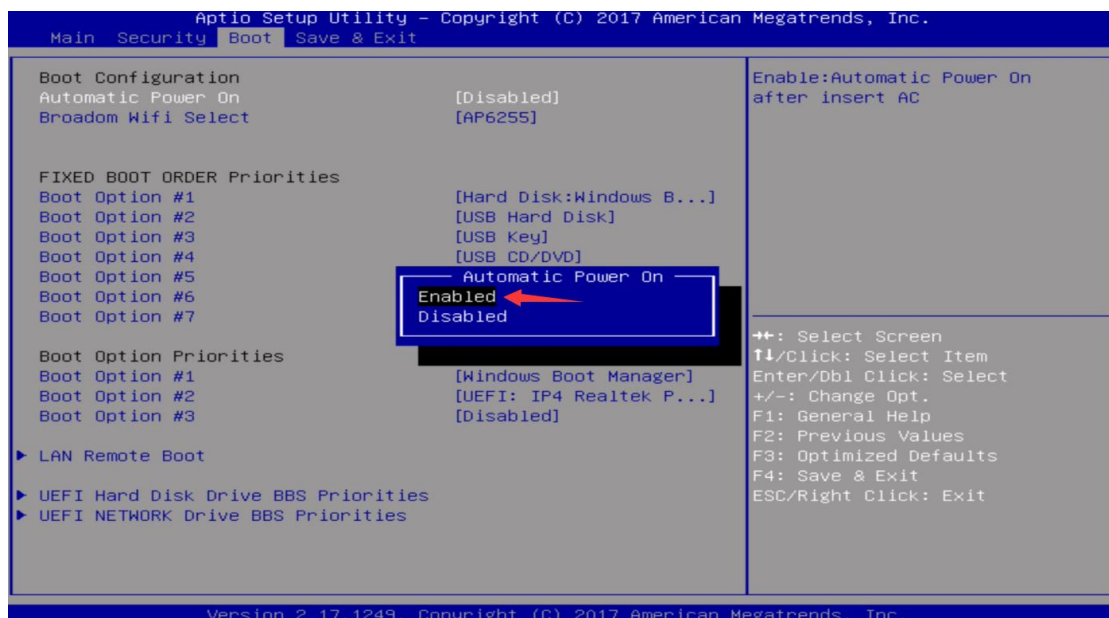


## How does BT3 PRO enter the BIOS to set the call to automatically boot

1. Power on and press the keyboard delete, enter the BIOS, use the keyboard direction keys to find the Boot, select Automatic Power on



2. Press Enter to select Enable and enable (note: Disables means disabled)



3. Press Enter, press F4 to select Yes to save the settings and exit. The machine will automatically reboot into the system and complete the setup!

