

## USB cable brush tutorial

Hardware to be prepared: computer, USB cable

1. Download the brush tool: USB\_Burning\_Tool\_V2.1.6.8 (note that the GT1 mini must use this tool version to brush, the old version of the brush tool can not be brushed)

Tool download link link:

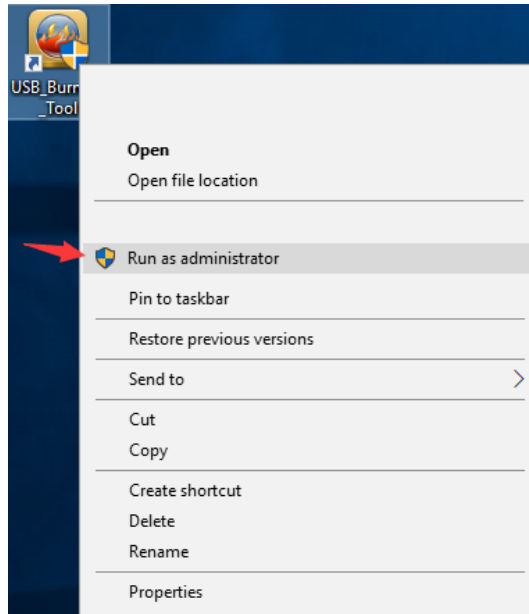
[https://beelink-my.sharepoint.com/:f:/g/personal/firmwareservice\\_beelink\\_onmicrosoft\\_com/Evt\\_dCFRICqVOMVR8NJDBLscBSXfQ4\\_VW83gvH50emxF0iA?e=OoUWKE](https://beelink-my.sharepoint.com/:f:/g/personal/firmwareservice_beelink_onmicrosoft_com/Evt_dCFRICqVOMVR8NJDBLscBSXfQ4_VW83gvH50emxF0iA?e=OoUWKE)

Follow the wizard prompts to install and complete step by step, the icon appears on the desktop

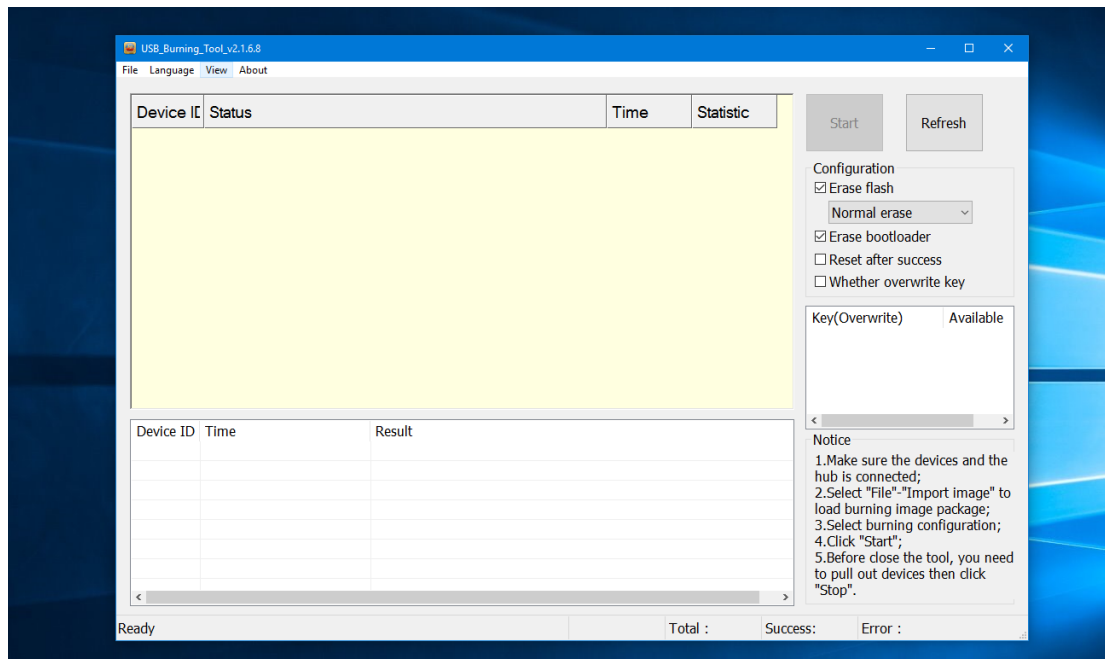


2. Download the installation package to store the easy-to-find location

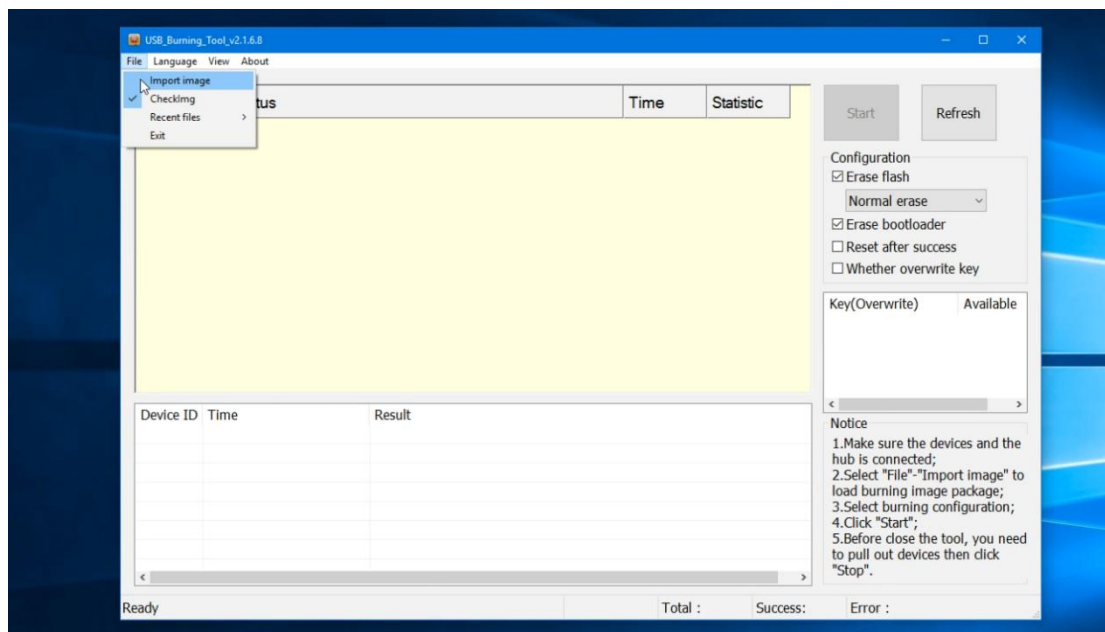
3. Right click on Run as administrator and run as administrator



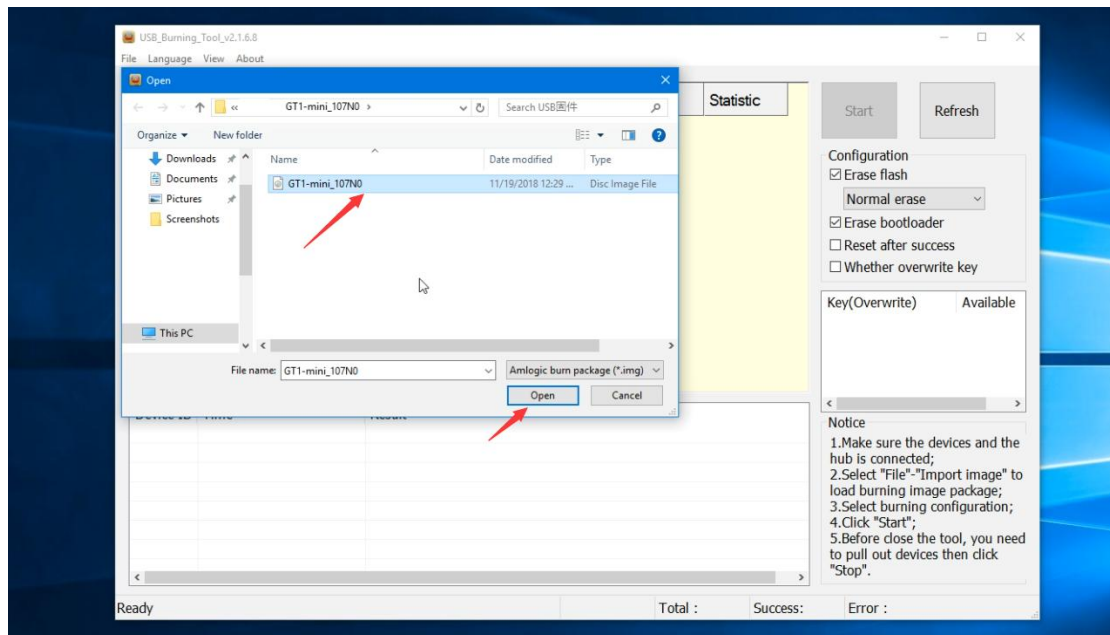
4. Pop up the brush interface, as shown below



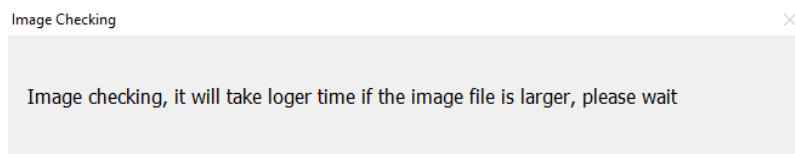
5. Click File in the upper left corner and select Import image, as shown below.



6. Load the firmware, click Import image to enter, find the downloaded USB cable brush firmware location, select and click to open, as shown below



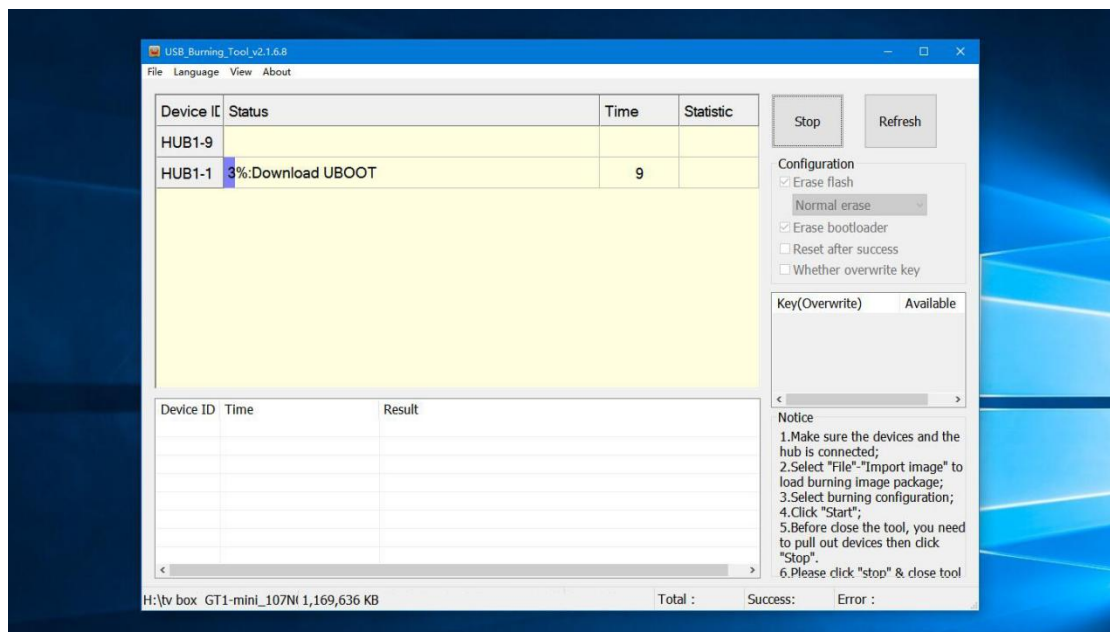
7. The interface pops up, waiting for the interface to disappear, that is, the brush package is fully loaded, and then click Start.



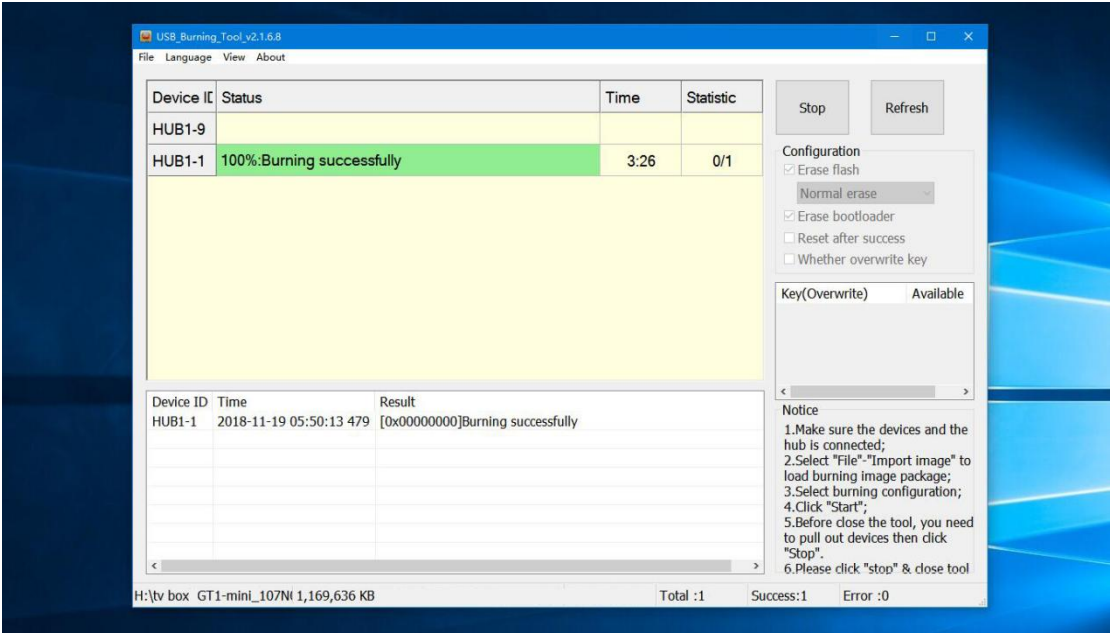
8. Plug the USB end into the computer's USB port, then plug the other end of the USB into the USB2.0 port on the right side of the GT1 mini (note: only insert this USB2.0 interface on the right)



9 . Wait for the loading interface to appear, as shown below



10. Load 100%, click stop, close the tool, complete the brush






## SD card brush tutorial




Need to prepare the brush hardware: SD card

1. Copy the downloaded SD card flasher firmware to the SD card root directory (the SD card format must be FAT32)

Name	Date modified
 factory_update_param.aml	11/19/2018 12:29 ...
 recovery	11/19/2018 12:29 ...
 u211-ota-20181119	11/19/2018 12:30 ...

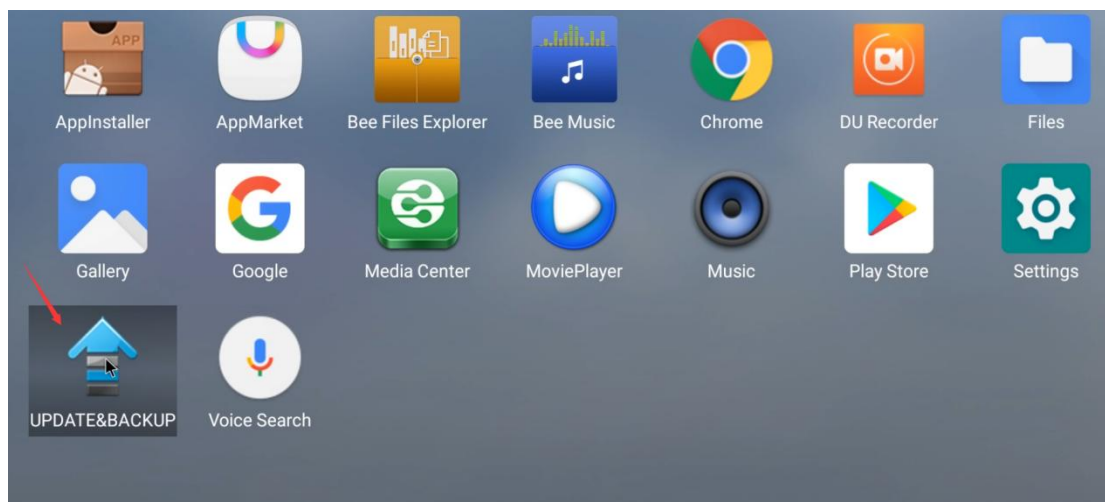
2. Insert the SD card into the SD card slot position, plug in the HDMI cable, turn on the monitor, plug in the power and turn it on.



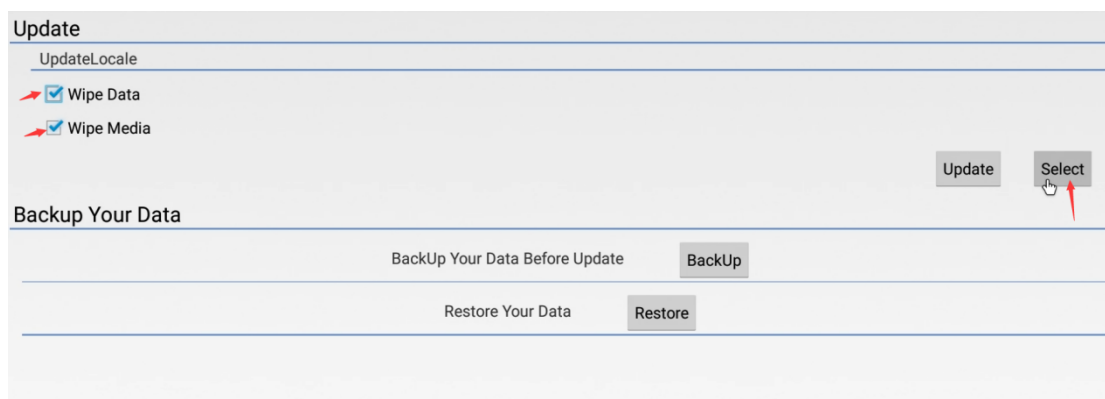
3. Go to the home page and click on the icon  , Enter the application page



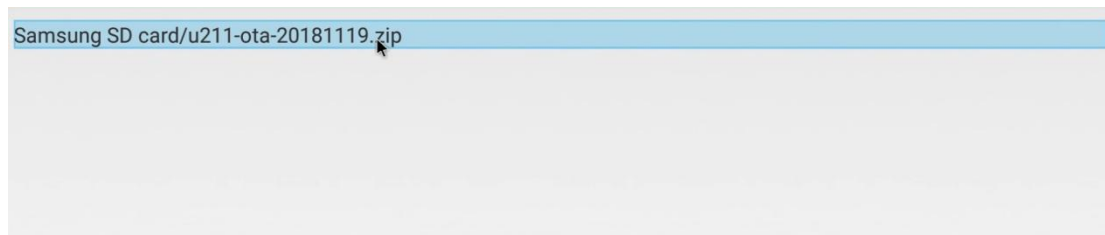
4. Click to open UPDATE&BACKUP



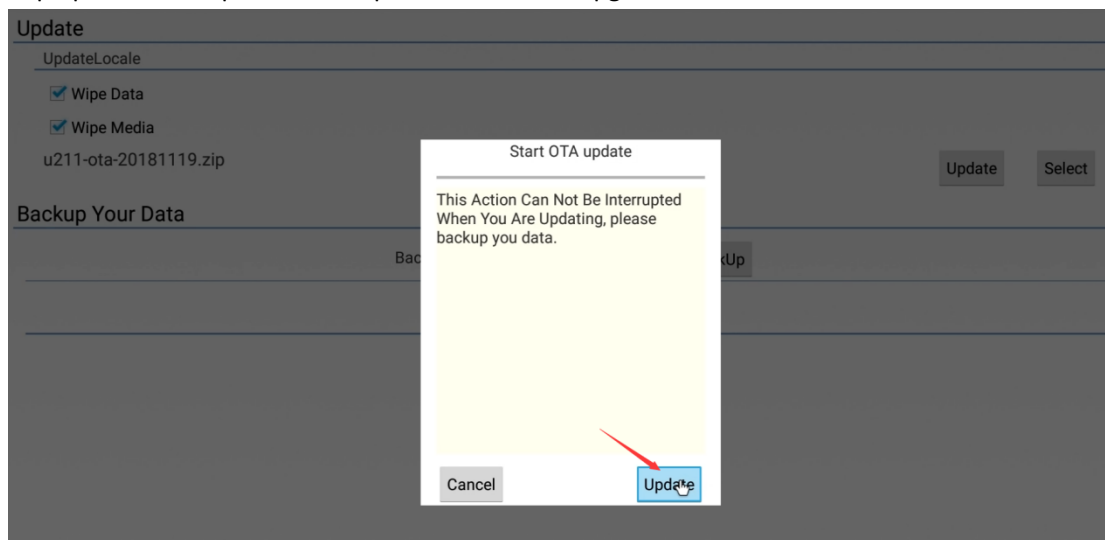
Check Wipe Data and Wipe Media, click Select



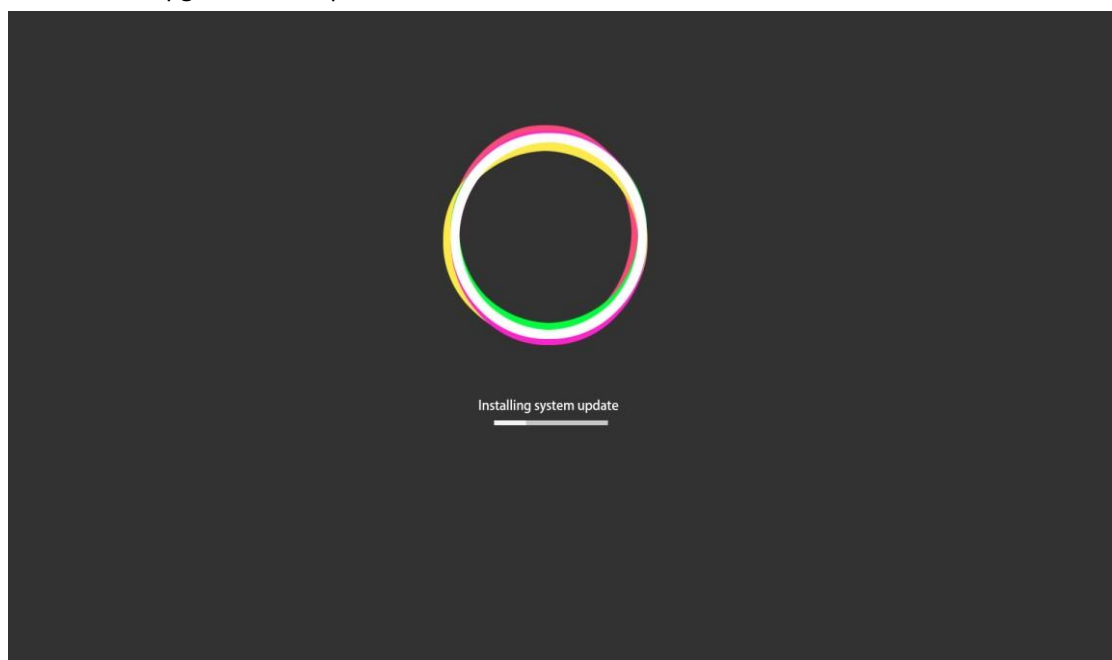
Pop up the SD card brush package and click to select



Pop up Start OTA update, click Update to start the upgrade.



Wait for the upgrade to complete



End.....

More: [www.bee-link.com](http://www.bee-link.com)

Service Email: [beelinkservice@bee-link.com](mailto:beelinkservice@bee-link.com)