

# Ubuntu\_17.04 Installation SOP

## 1. Summary:

- ◆ *Hardware Requiements*
- ◆ *Ubuntu BIOS Update and Setting up*
- ◆ *Platform Setup Procedure*
- ◆ *Ubuntu Settings*

## 2. Hardware Requirements

2.1 The following are required for flashing:

- ◆ Board: AB1 PC BOX\*1
- ◆ Software image files (ubuntu-17.04-desktop-amd64.iso)
- ◆ USB Disk\*1
- ◆ USB Keyboard\*1
- ◆ USB Mouse\*1

## 3. Ubuntu BIOS Update and Setting up

3.1 Flash AB1 Ubuntu BIOS(**version: v15 or later**) in Windows or Shell mode.

3.2 After BIOS flash finished, restart the device then Press “Del” to enter BIOS Setup directly, but not launch Windows again.

3.3 Press F9 to load BIOS Setup to default setting.

3.4 Press F10 to save the setting and restart.

3.5 Once device restart, press “Del” to enter BIOS Setup again.

3.6 ~~Select “Boot” page, Set “OS Selection” as “Intel Linux”.~~

3.6.1 Select “Chipset” →”South Bridge”, set “OS Selection” as “Intel Linux”.

3.7 Press F10 to save the setting.

3.8 Then follow below [step 4.2](#) to install Ubuntu OS 17.04.

## 4. Platform Setup Procedure

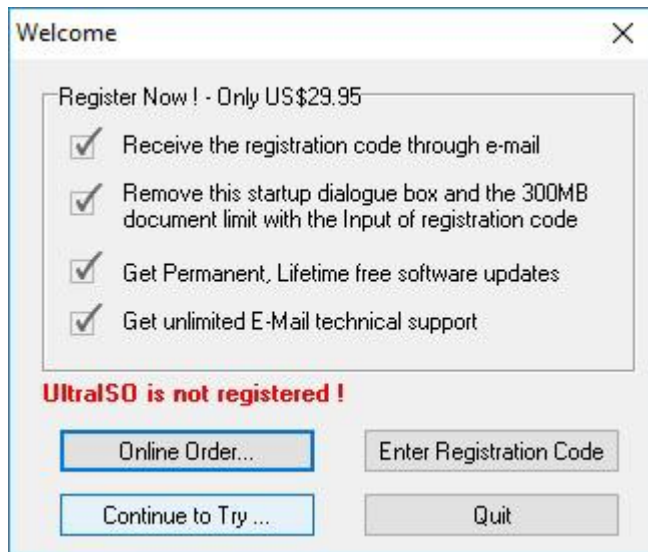
### 4.1 Preparing Ubuntu Image for Installation from Windows

4.1.1 First, download the UltraISO from

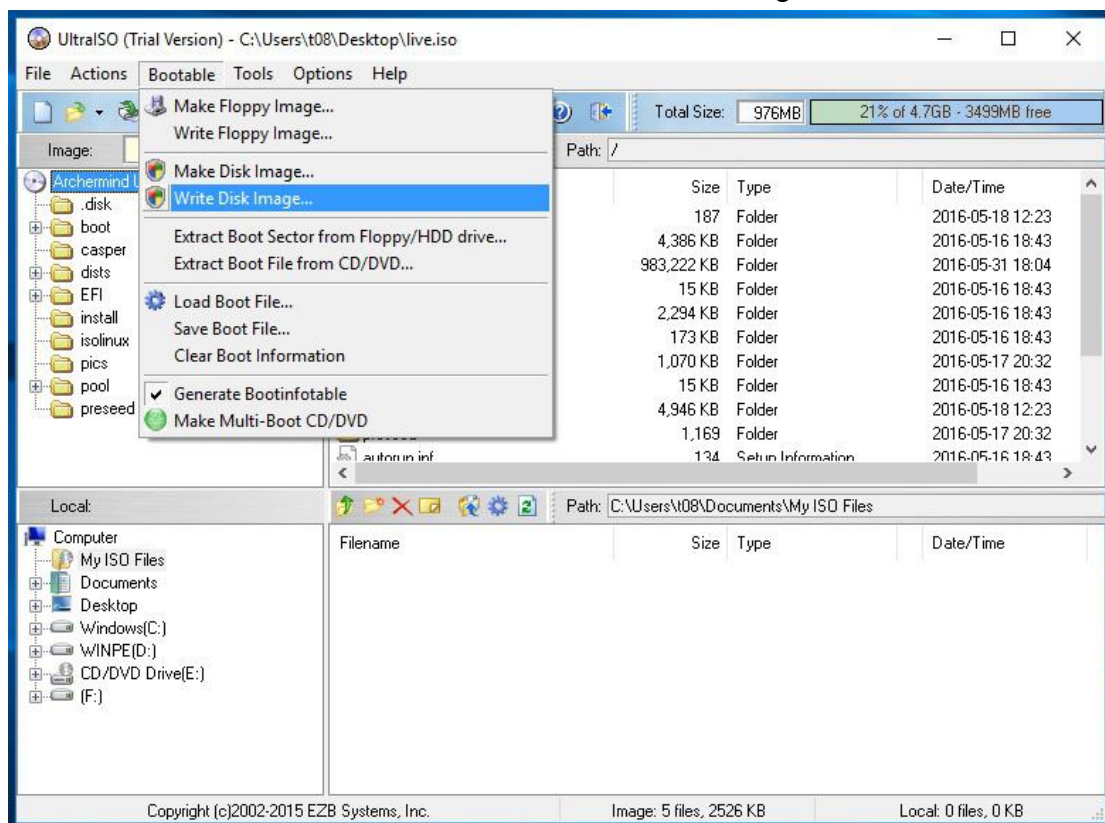
[http://www.ezbsystems.com/dl1.php?file=uiso9\\_pe.exe](http://www.ezbsystems.com/dl1.php?file=uiso9_pe.exe) and install this tool.

4.1.2 Plug your U disk into PC and open the ISO file

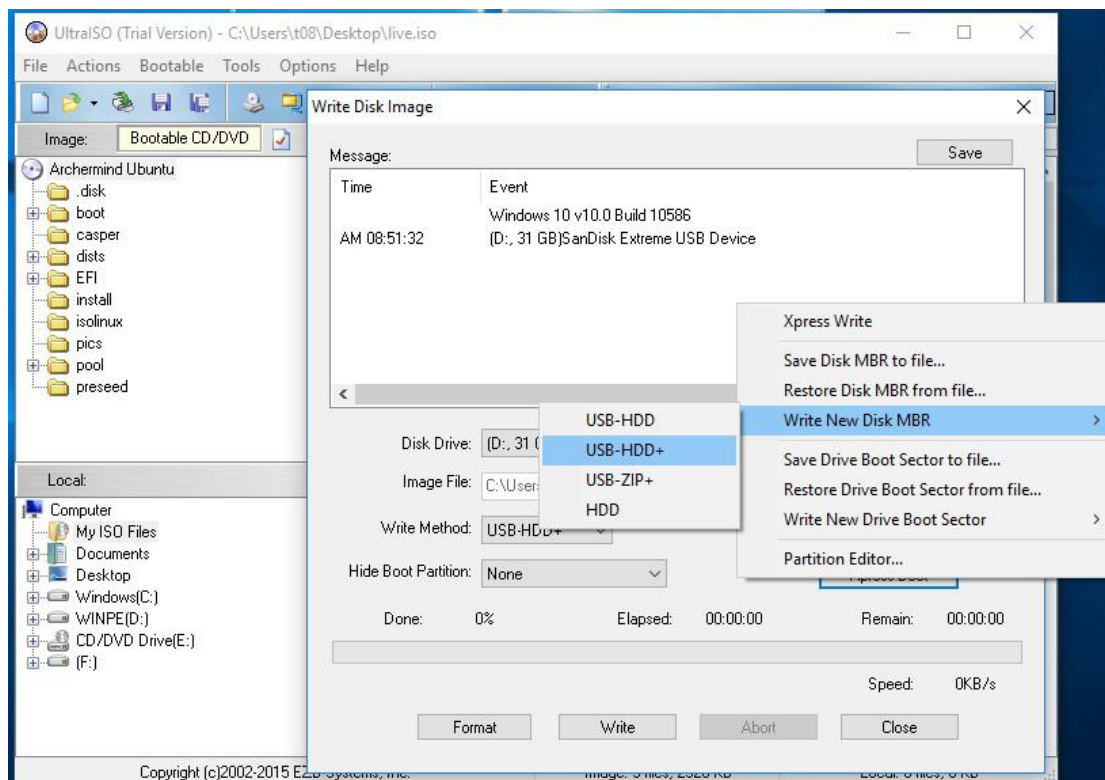
“ubuntu-17.04-desktop-amd64.iso” , then choose”Continue to Try...” to mount the image.



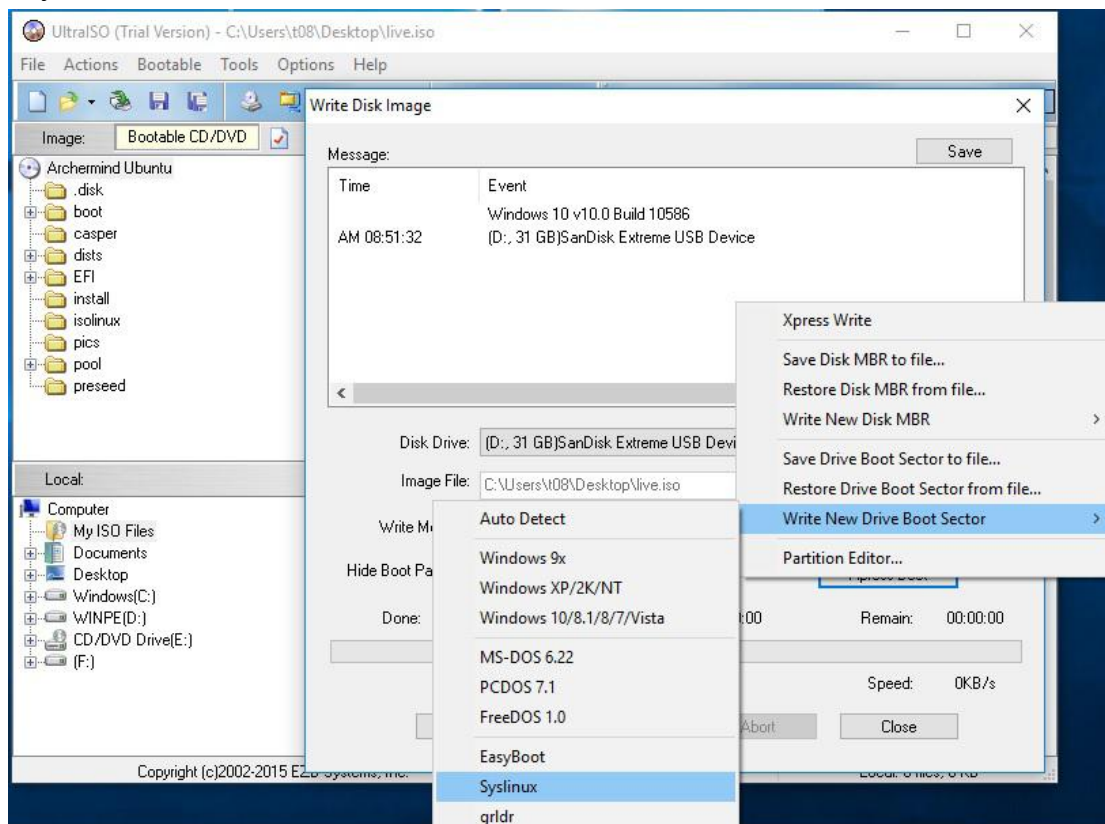
4.1.3 Choose “Bootable”, then choose “Write Disk Image...”.



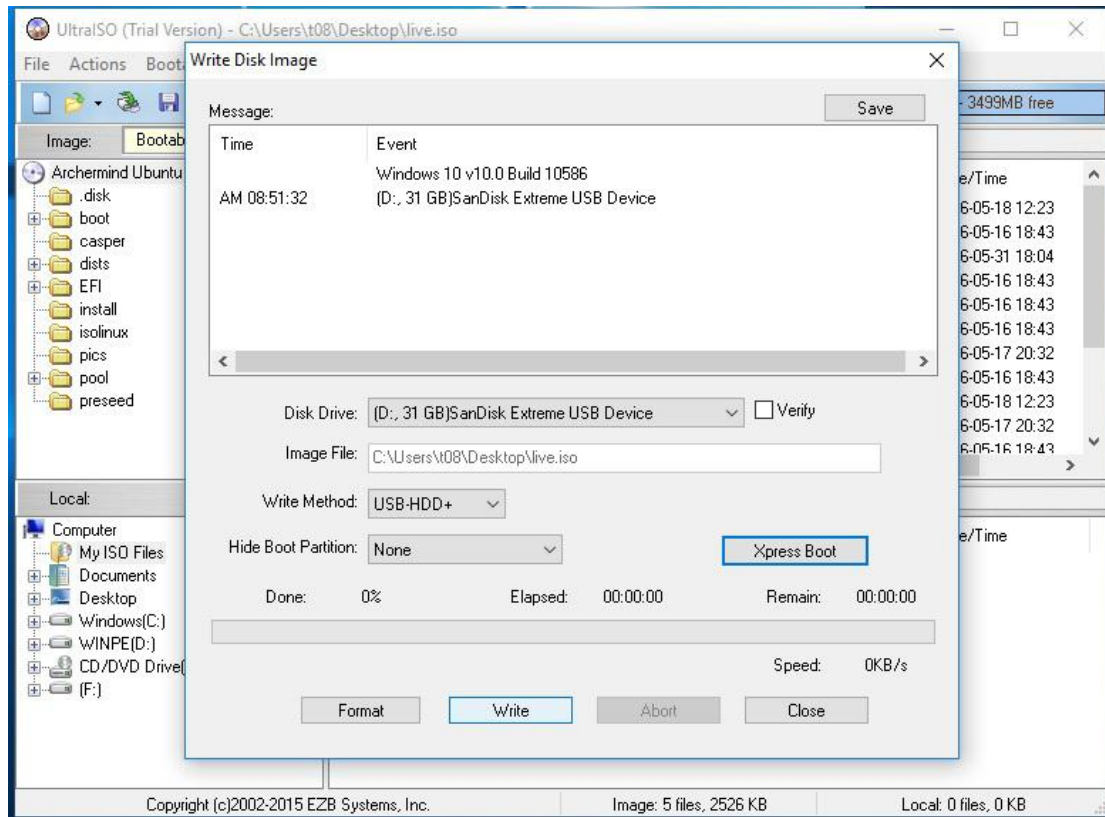
4.1.4 Choose your U disk as the hard disk drive. Click “Xpress Boot”, then click “Write New Disk MBR”, choose “USB-HDD+”.



4.1.5 Click “Xpress Boot”, then click “Write New Driver Boot Sector”, choose “Syslinux”.



4.1.6 Click “Write” button and waiting for complete. Once complete, you can remove your U disk from PC.



## 4.2 Ubuntu Installation Procedures

4.2.1 Plug in USB keyboard and mouse to USB ports.

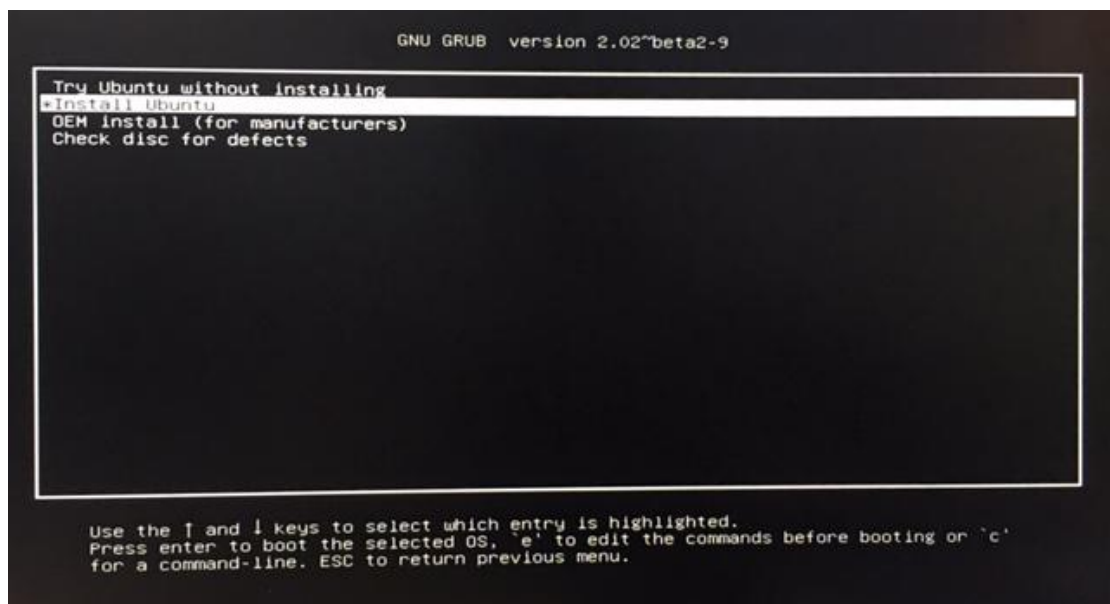
4.2.2 Plug in USB disk built by step 4.1 to the USB port.

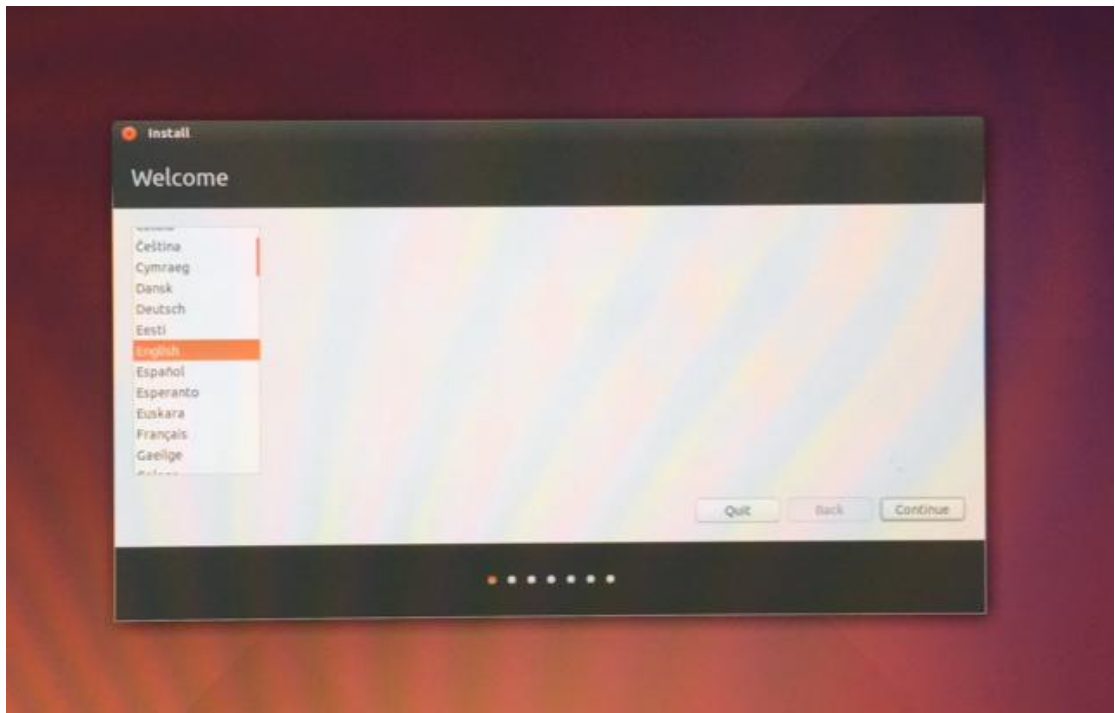
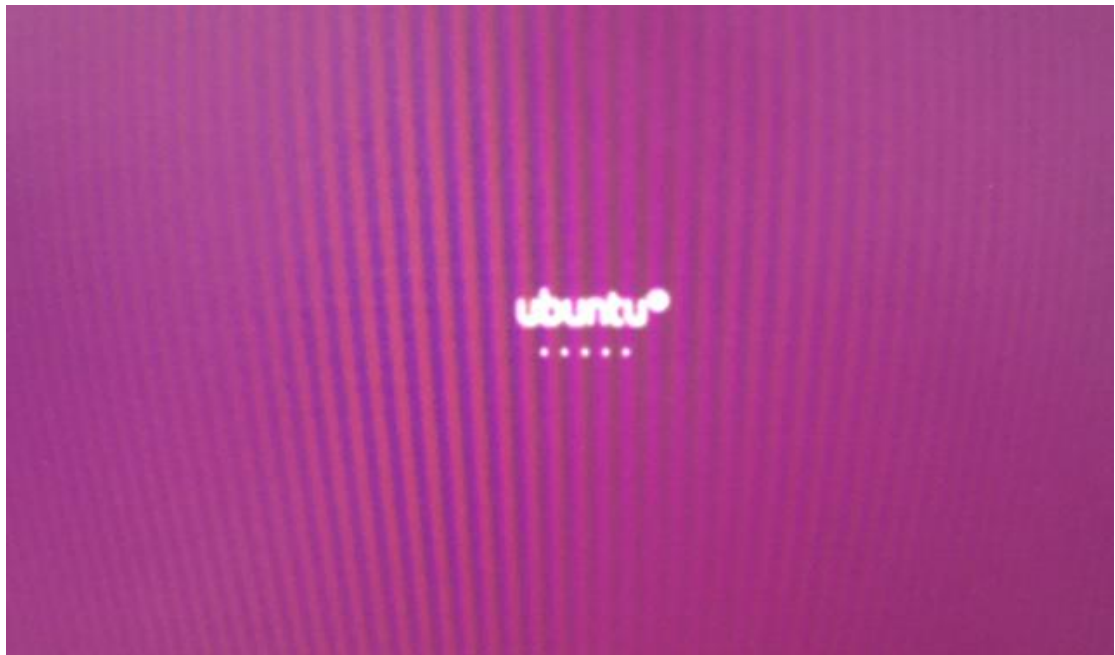
4.2.3 Power on the board, enter the Boot menu by pressing F7 on the Keyboard (Make sure you have a keyboard connected to PC BOX)

4.2.4 Choose boot from the USB Disk(The different USB disk may have different name).

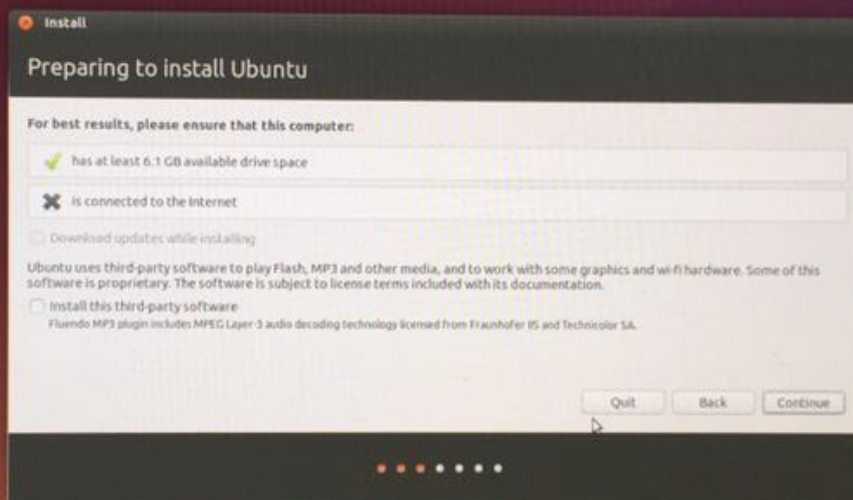
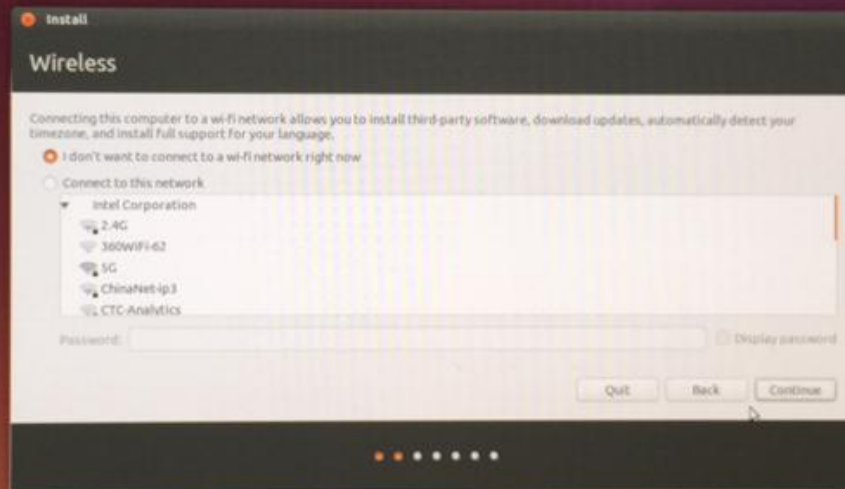


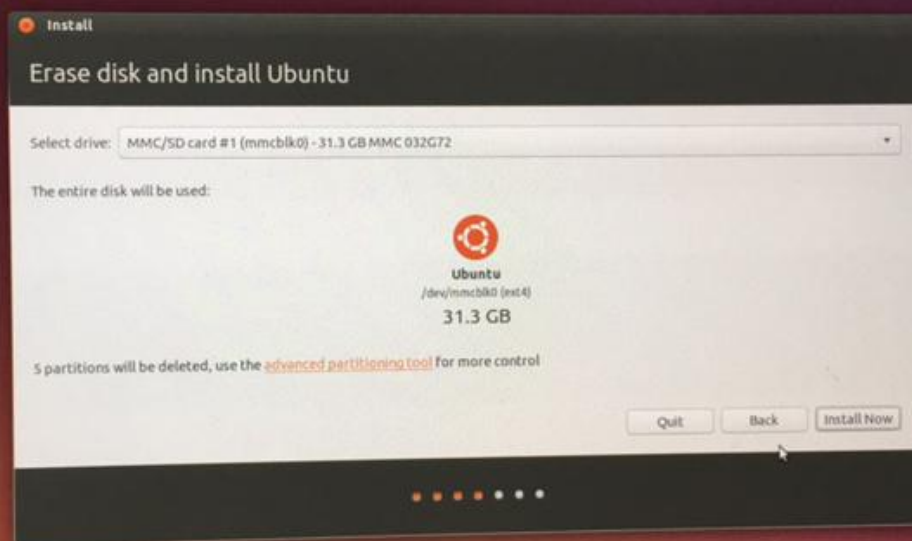
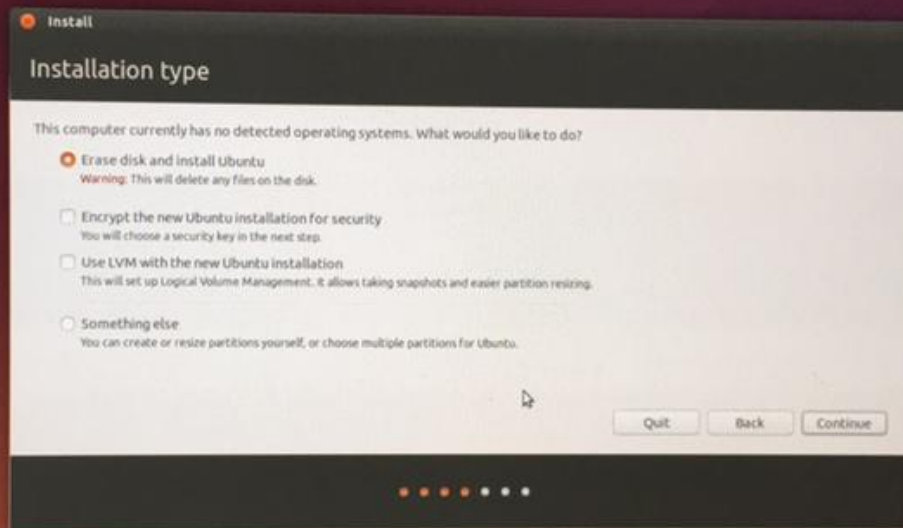
4.2.5 Then it will show an installer UI. Click next to install the Ubuntu OS as follow picture wizards.



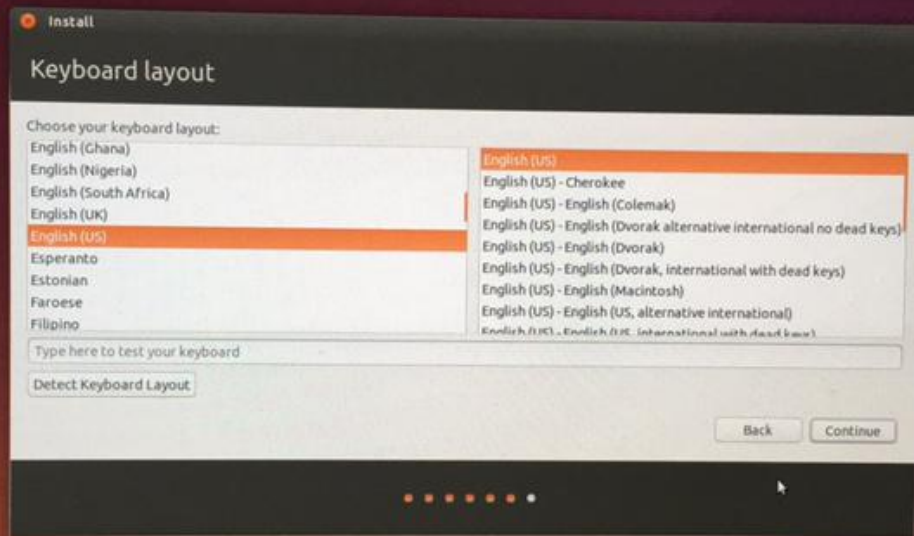
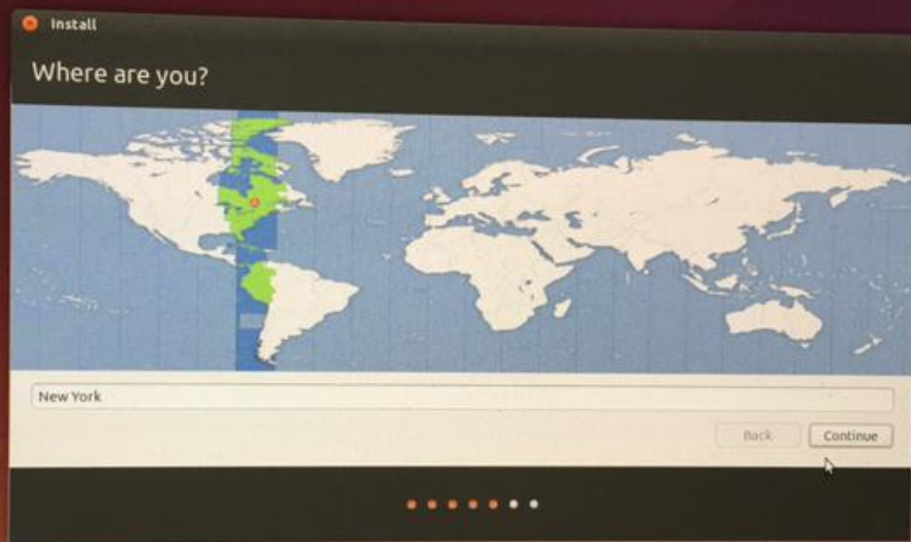


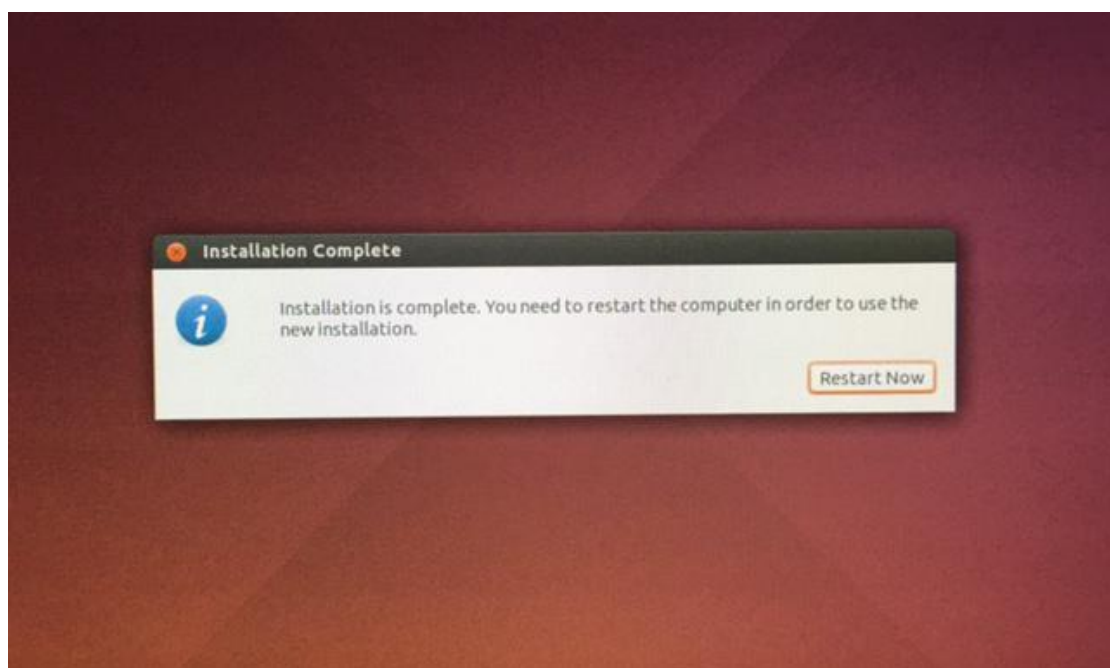
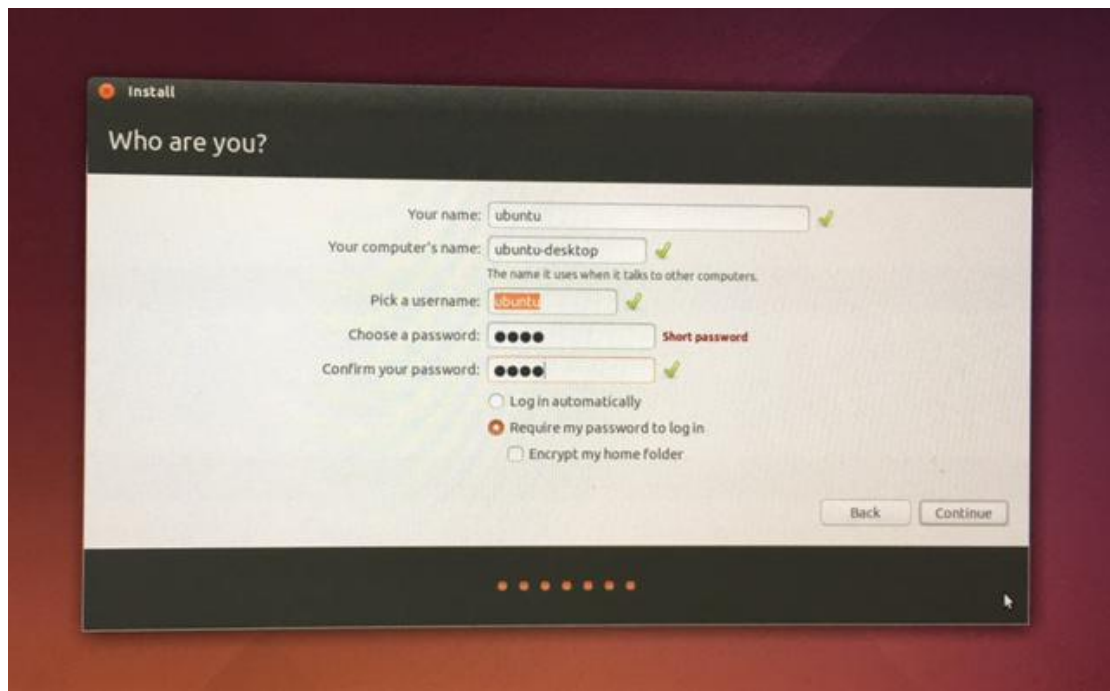












4.2.6 After installed finished, click “Restart Now” to reboot the board to startup with the Ubuntu OS.

## 5. Ubuntu Settings

### 5.1 Bluetooth Settings(Required)

5.1.1 Enter Ubuntu Desktop and press “Ctrl+Alt+T” to open Terminal.

5.1.2 Input “sudo su” to enter root.

5.1.3 Key in below command by steps.

```
apt install bluez-obexd  
systemctl --user start obex  
sudo systemctl --global enable obex
```