

# Ubuntu\_18.04 Installation SOP

(The tutorial is only available for the Beelink Gemini X45 and X55 Mini PC)

## 1 .The following are required for flashing:

- ◆ Software image files (ubuntu-18.04-desktop-amd64.iso)

Software image files download link:

<https://mega.nz/#!63wTGQBK!tJJ5bfMghbSnA5jvWqghRwq2urULqWlneTCOYttlYok>

- ◆ USB Disk\*1(USB Disk format is FAT32)
- ◆ USB Keyboard\*1
- ◆ USB Mouse\*1

## 2. Platform Setup Procedure

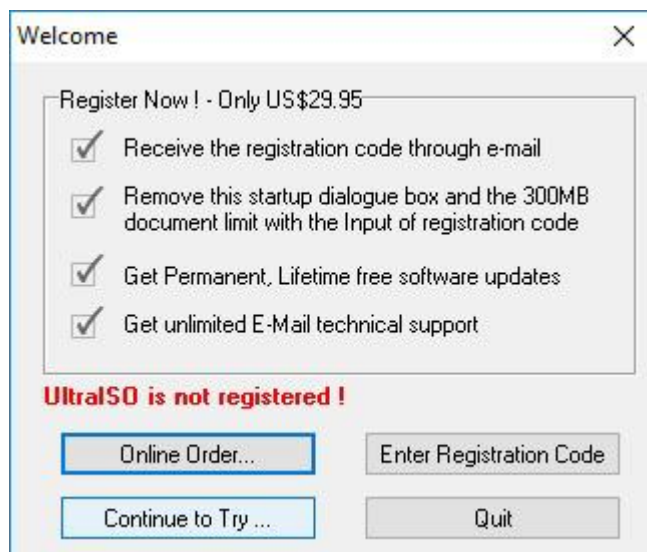
2.1 Preparing Ubuntu Image for Installation from Windows

2.2 First, download the UltraISO from

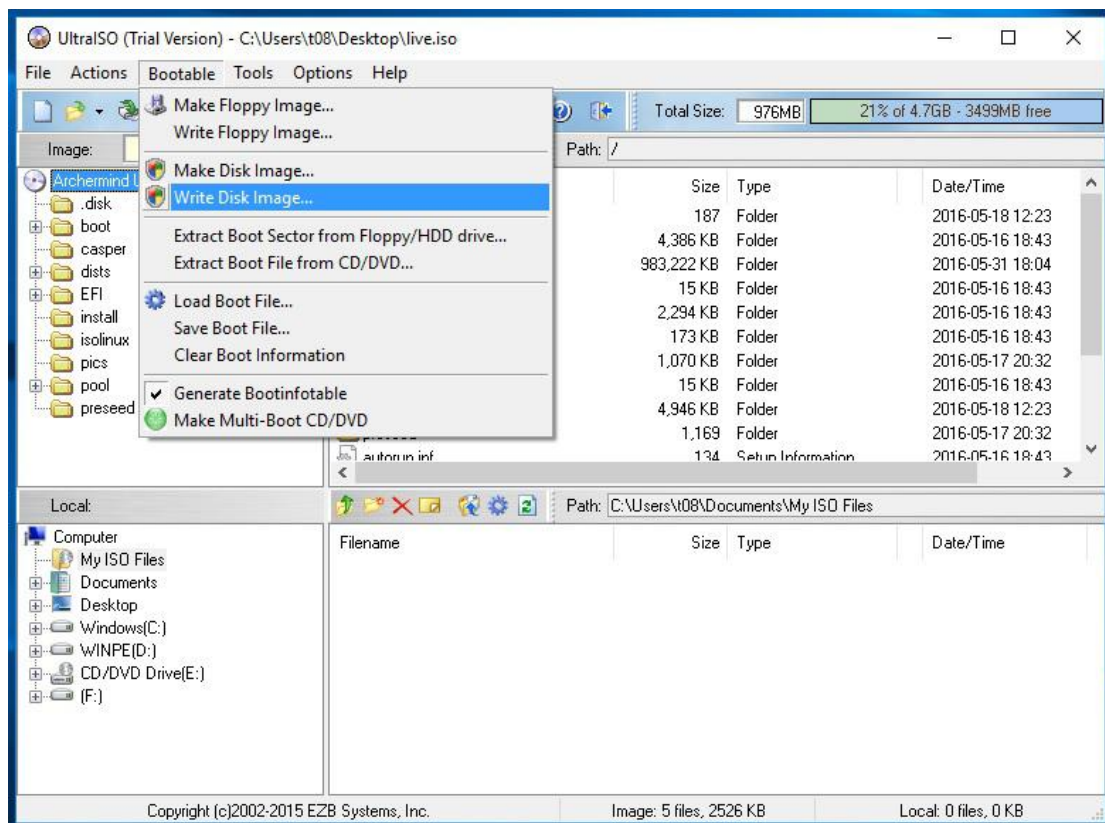
<https://mega.nz/#!znZ2n17b!2koN1eDKtVhoaOx8gtnYz1j-JJhxpvnCxIMKU-v2DA>

and install this tool.

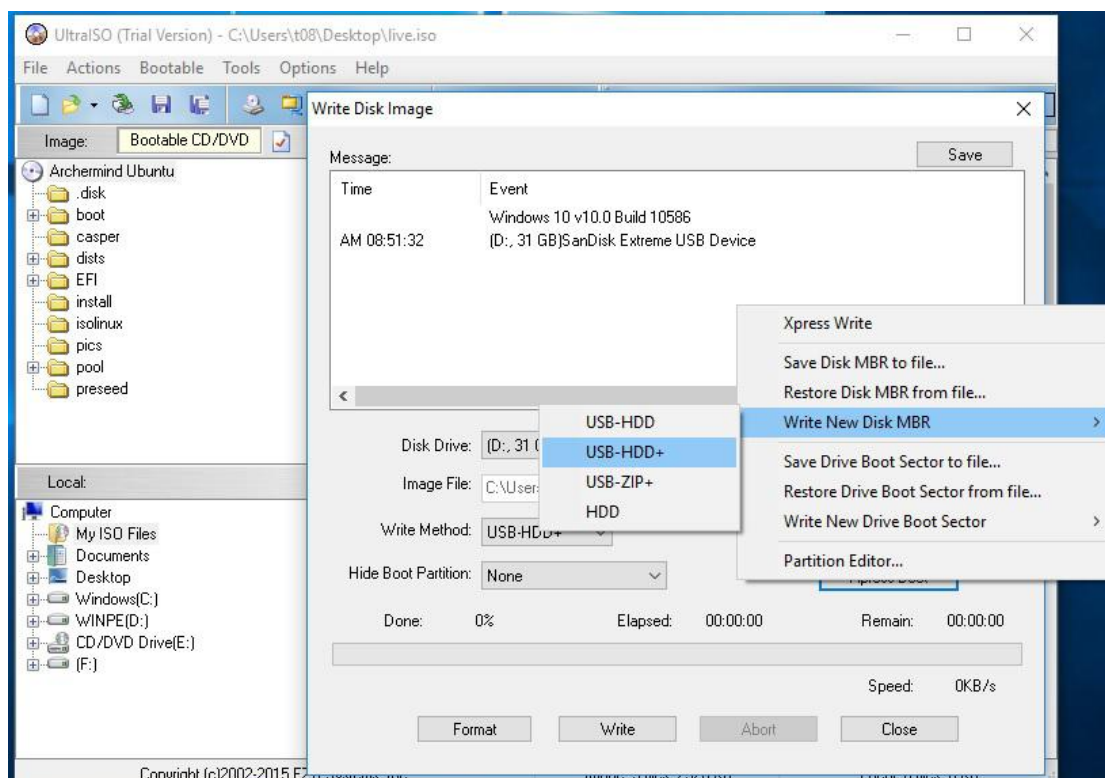
2.3 Plug your U disk into PC and open the ISO file "ubuntu-18.04-desktop-amd64.iso", then choose "Continue to Try..." to mount the image.



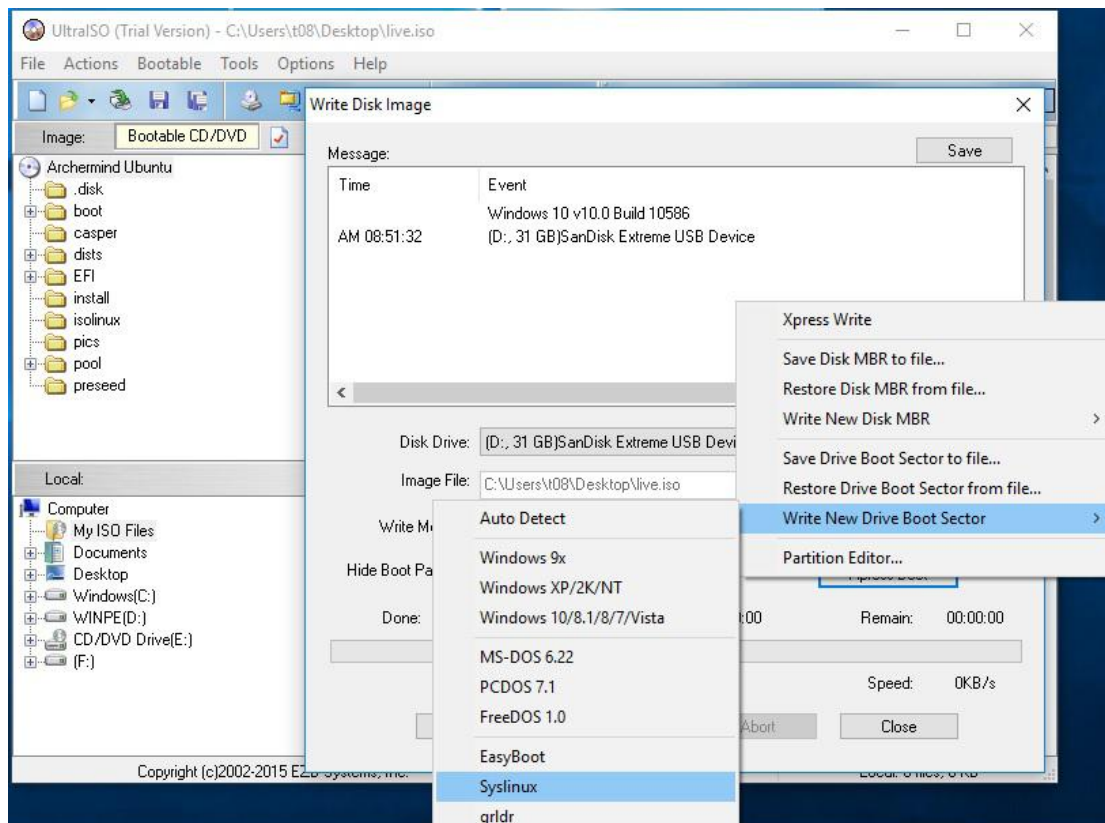
2.4 Choose "Bootable", then choose "Write Disk Image...".



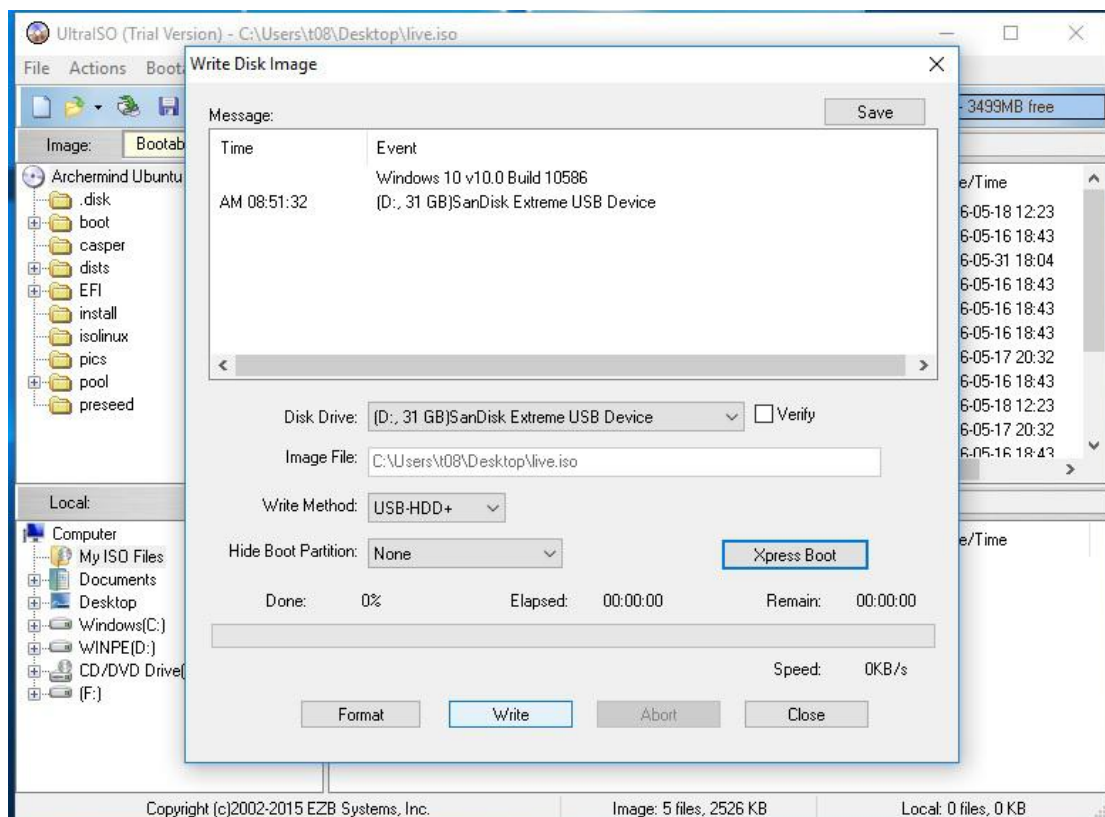
2.5 Choose your U disk as the hard disk drive. Click "Xpress Boot", then click "Write New Disk MBR", choose "USB-HDD+".



2.6 Click "Xpress Boot", then click "Write New Driver Boot Sector", choose "Syslinux".

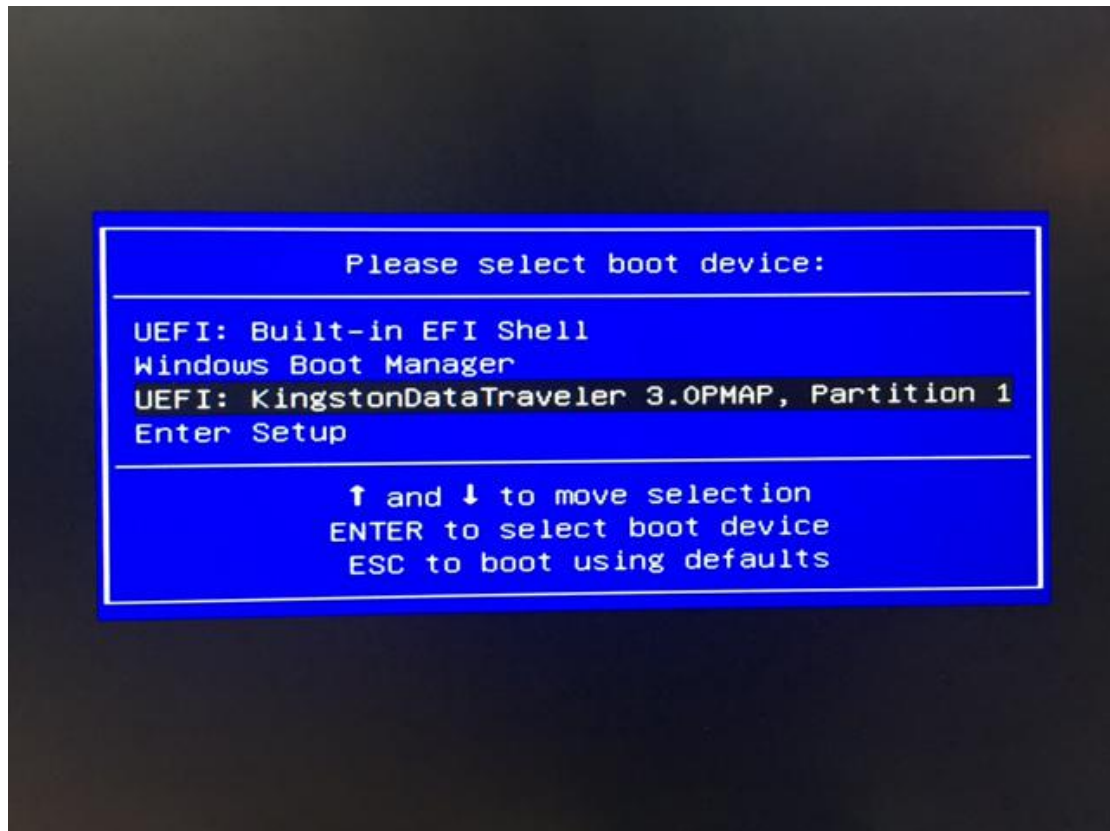


2.7 Click "Write" button and waiting for complete. Once complete, you can remove your U disk from PC.



### 3 Ubuntu Installation Procedures

- 3.1 Plug in USB keyboard and mouse to USB ports.
- 3.2 Plug in USB disk built by step 2 to the USB port.
- 3.3 Power on the board, enter the Boot menu by pressing F7 on the Keyboard (Make sure you have a keyboard connected to PC BOX)
- 3.4 Choose boot from the USB Disk(The different USB disk may have different name).



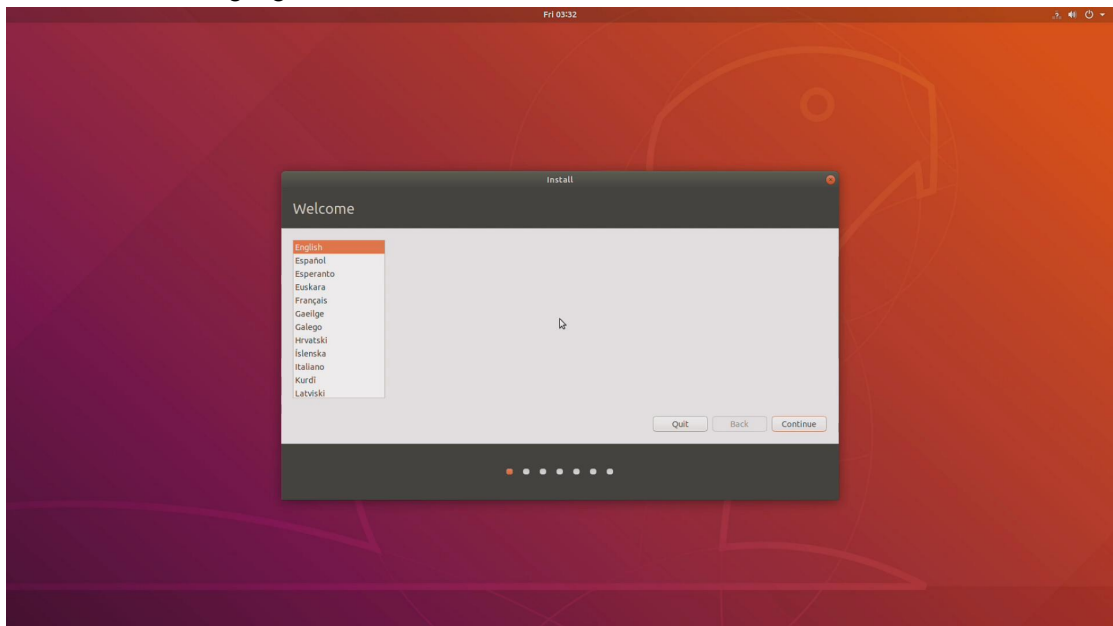
- 3.5 Then it will show an installer UI. Click next to install the Ubuntu OS as follow picture wizards.

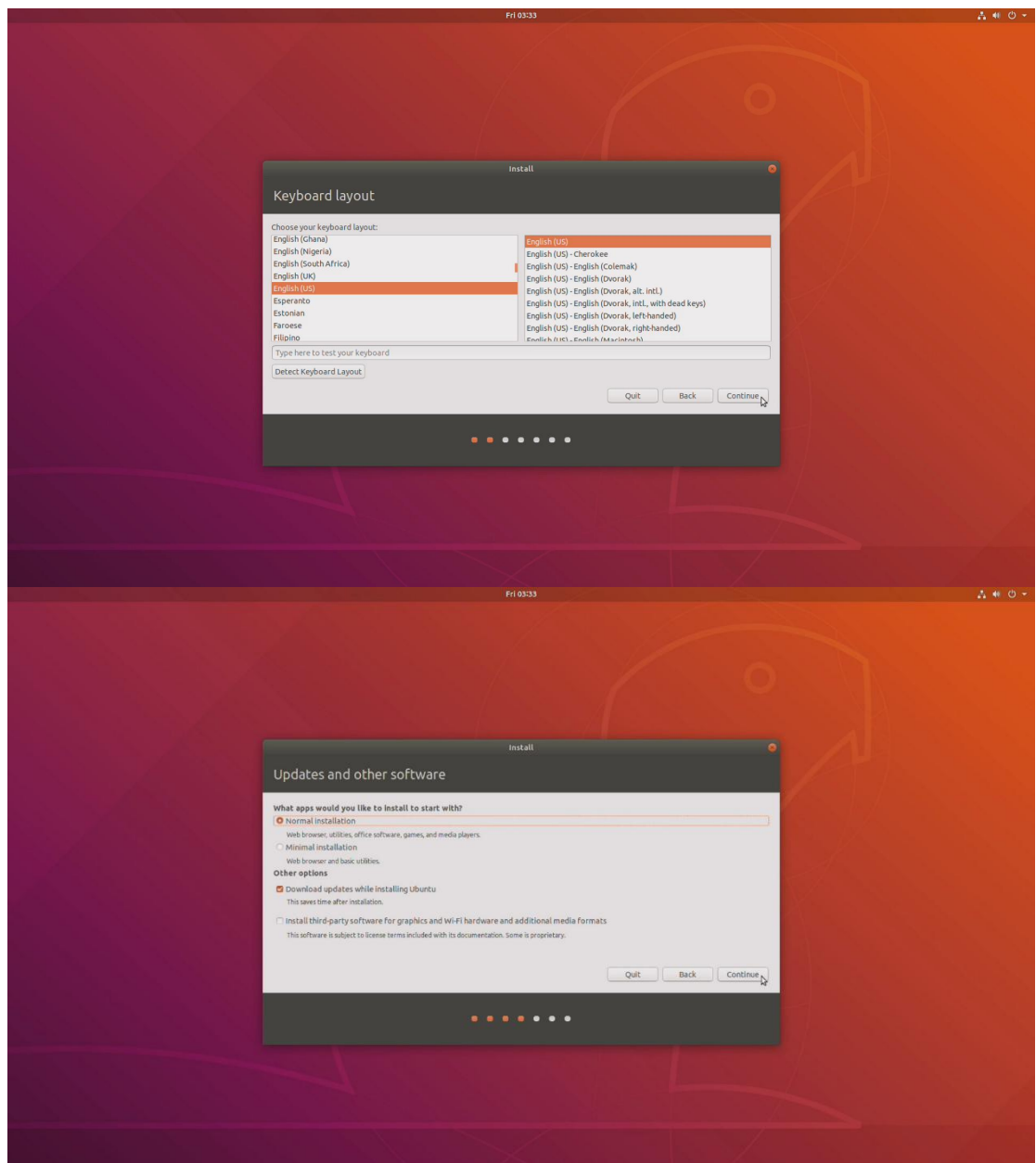


A : Start: enter the installation interface



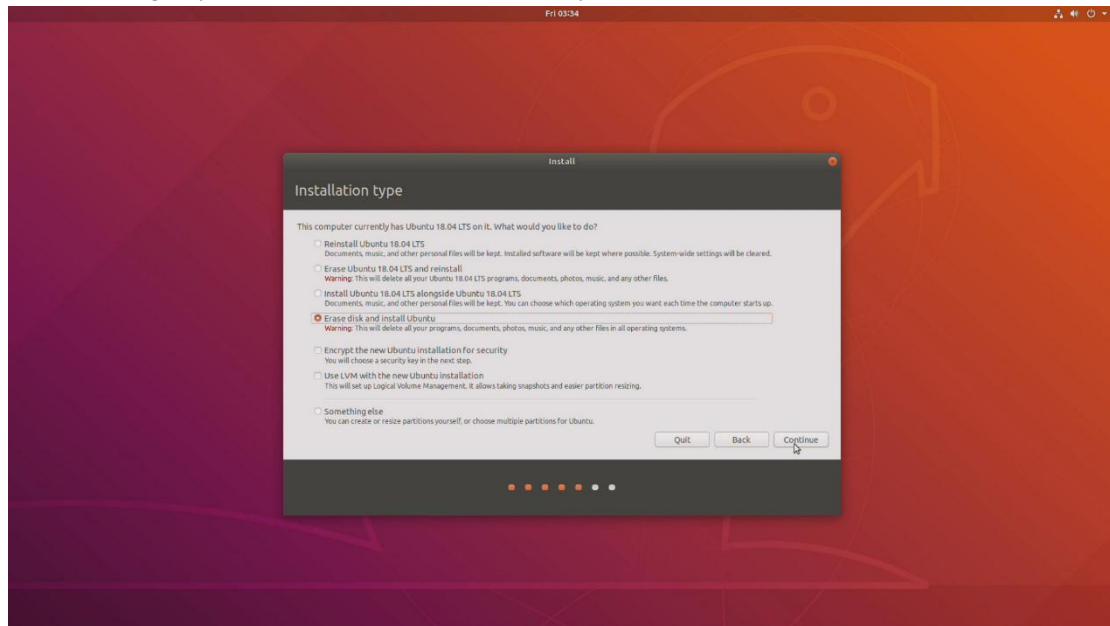
B : Choose local language



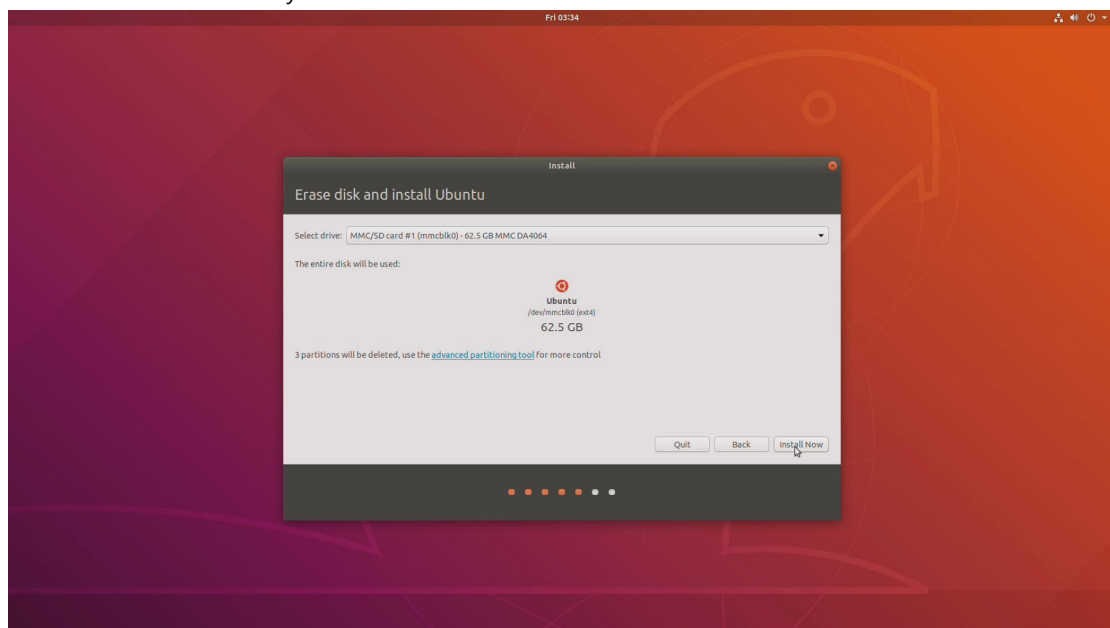


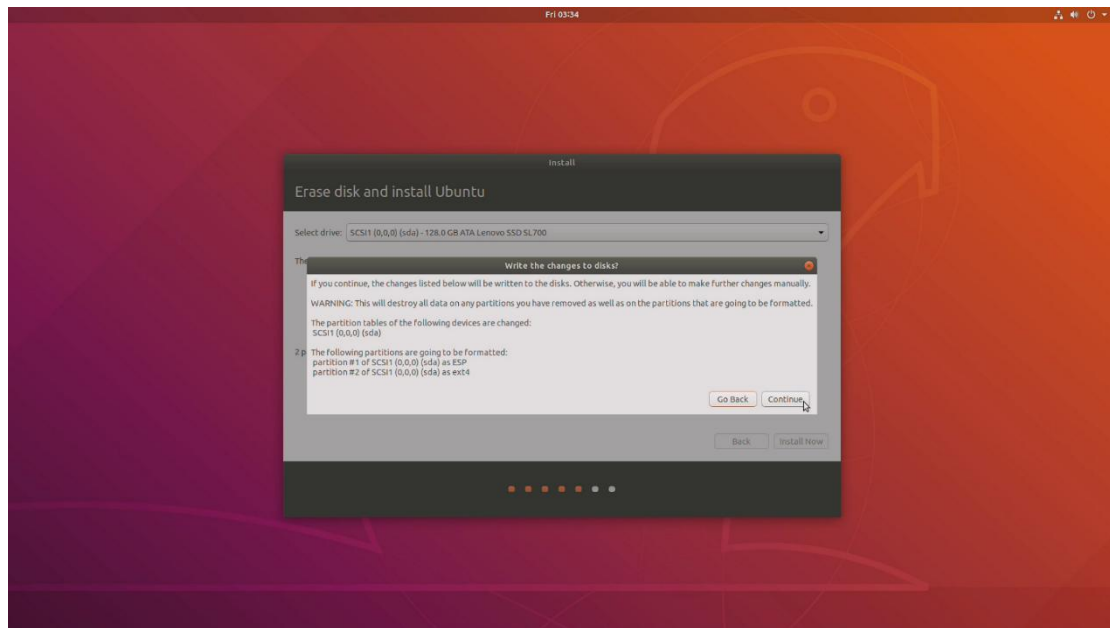


C : According to your request, choose installation type

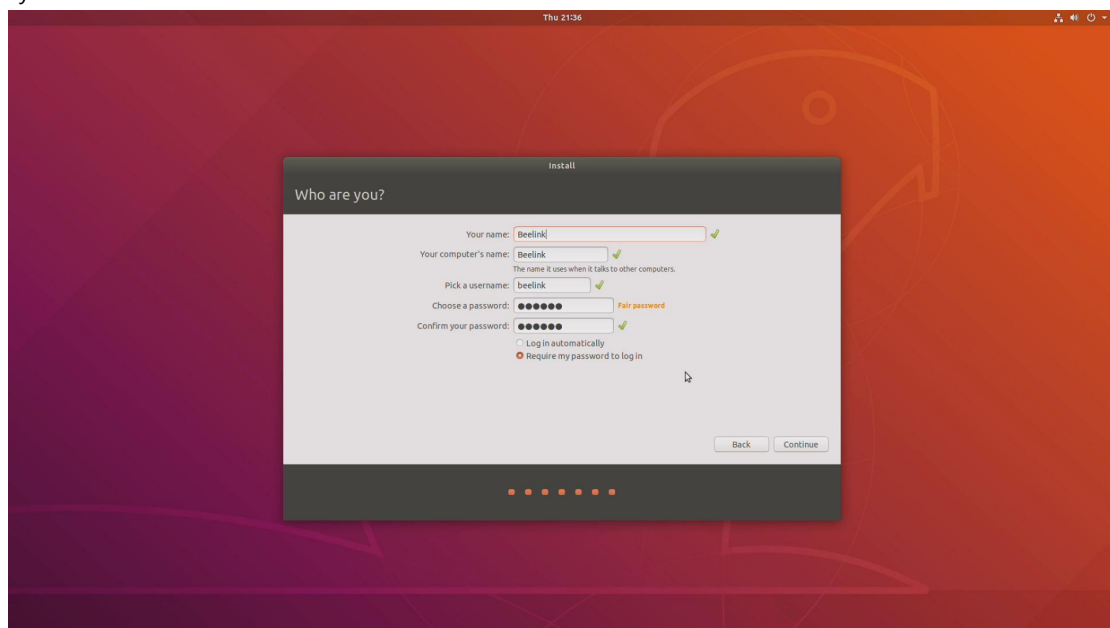


D : Select the hard drive you want to install



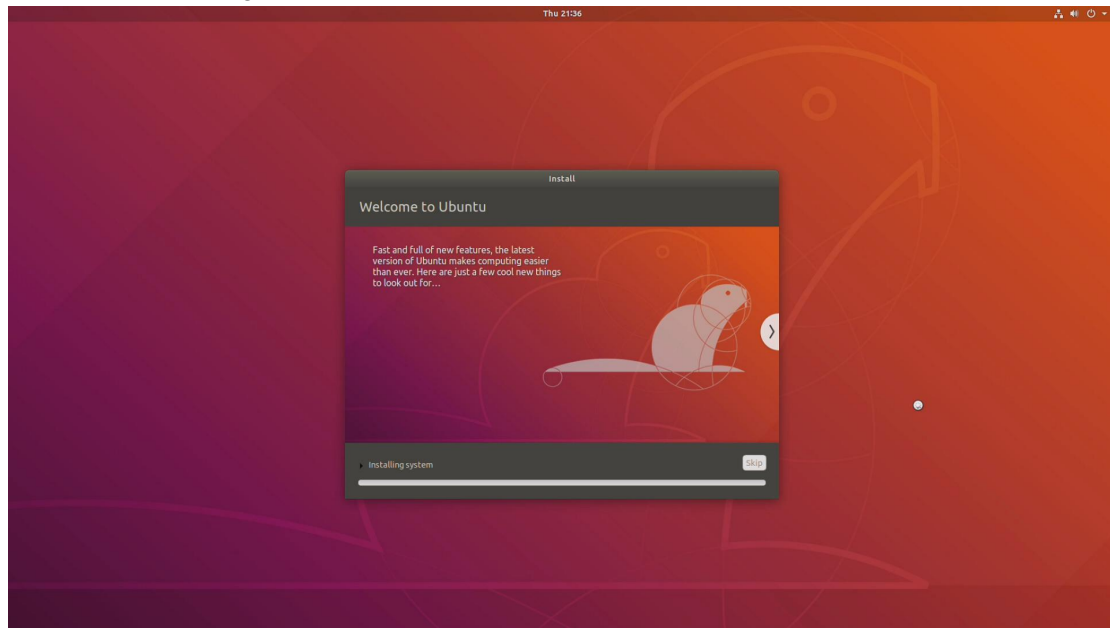


E : You must set your name and password, Note: Remember your password, used to log in to the system

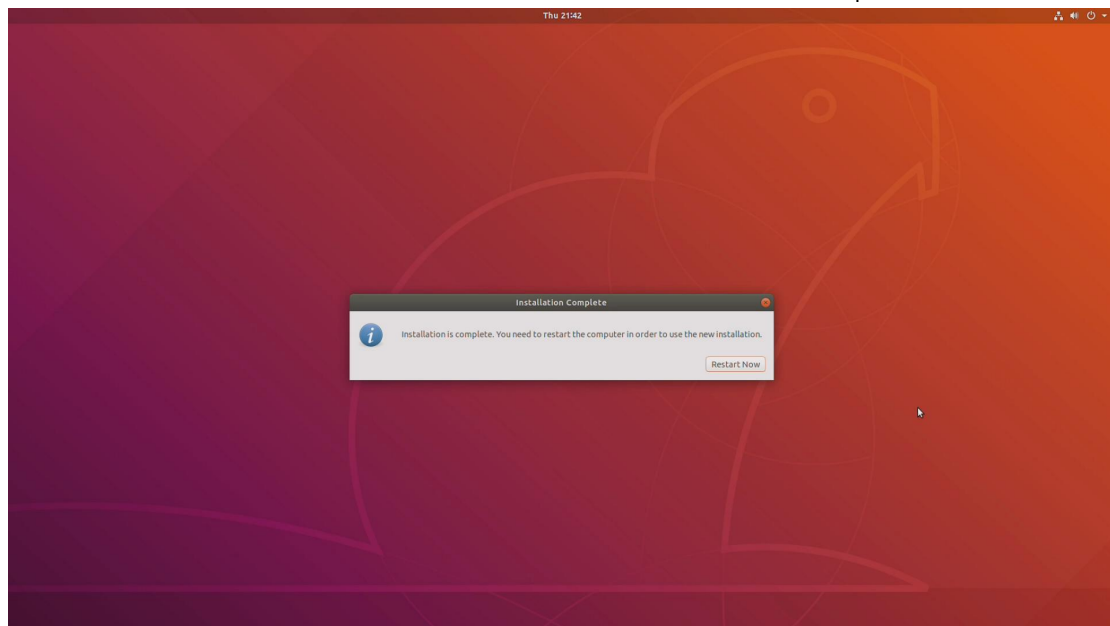


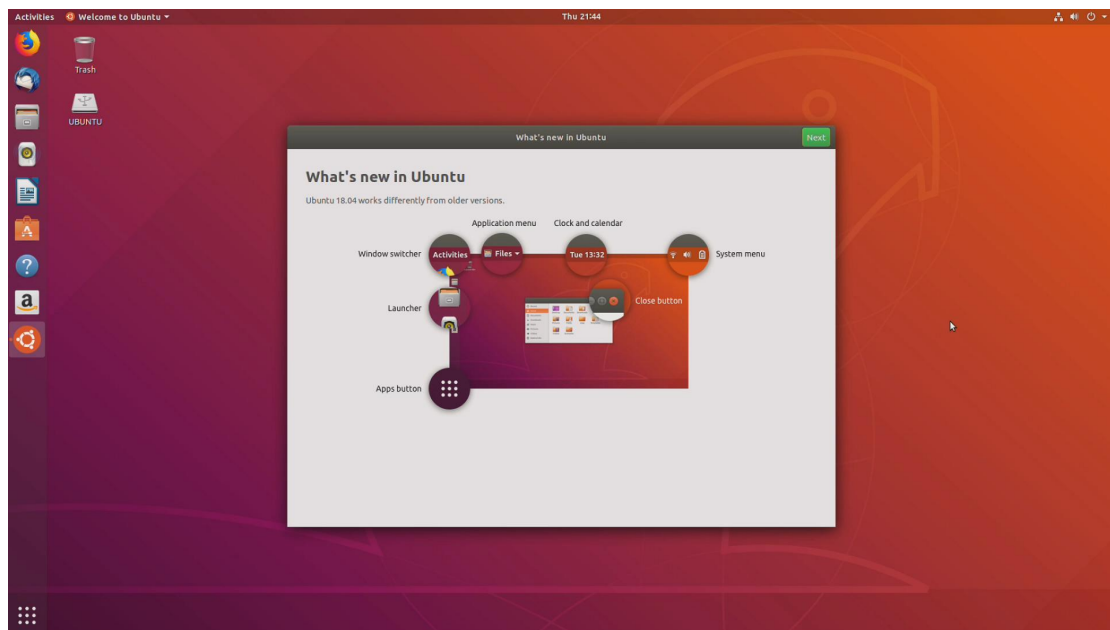


F : Installation in progress



G : After installed finished, click "Restart Now" to reboot the board to startup with the Ubuntu OS.





The installation is complete