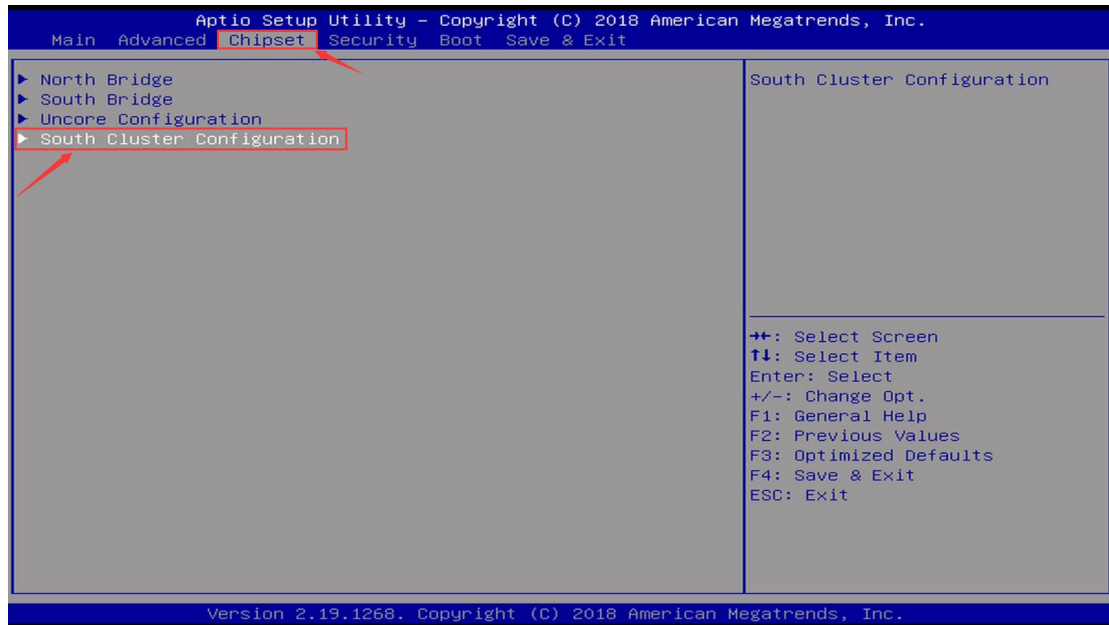
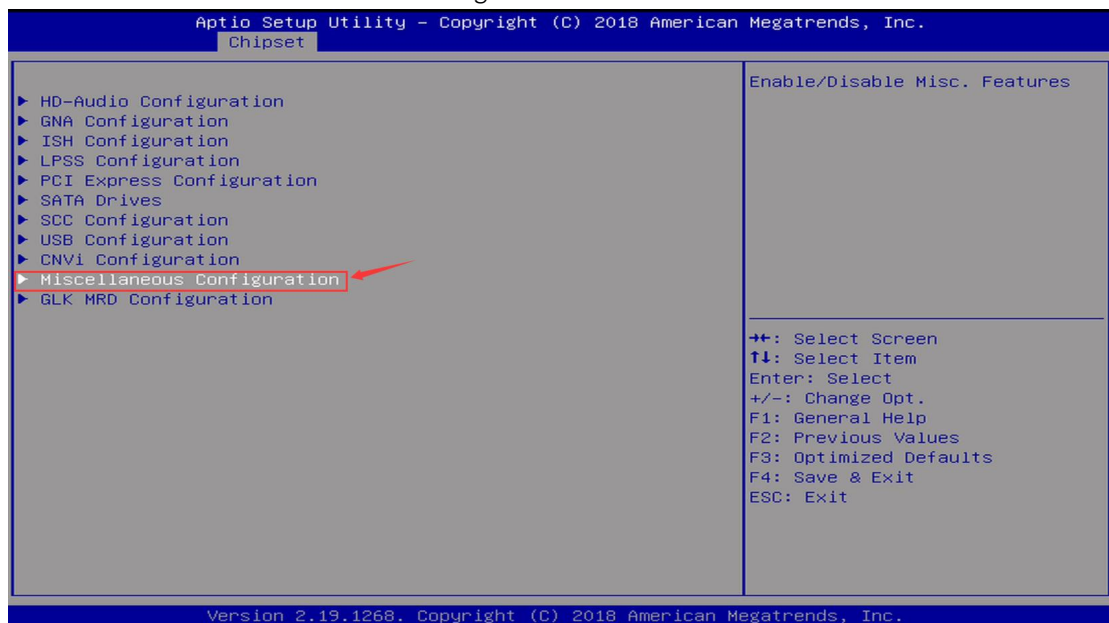


How to enter the BIOS to set the network wake-up function

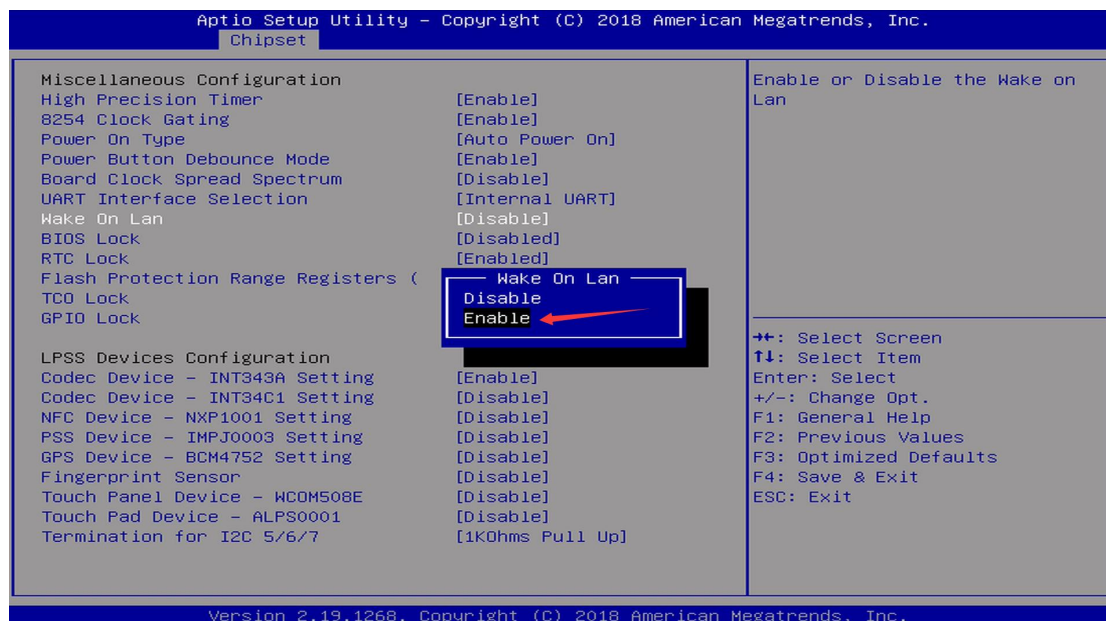
1. Start by pressing the keyboard delete, enter the BIOS, use the keyboard arrow keys to find the chipset, select South Cluster Configuration



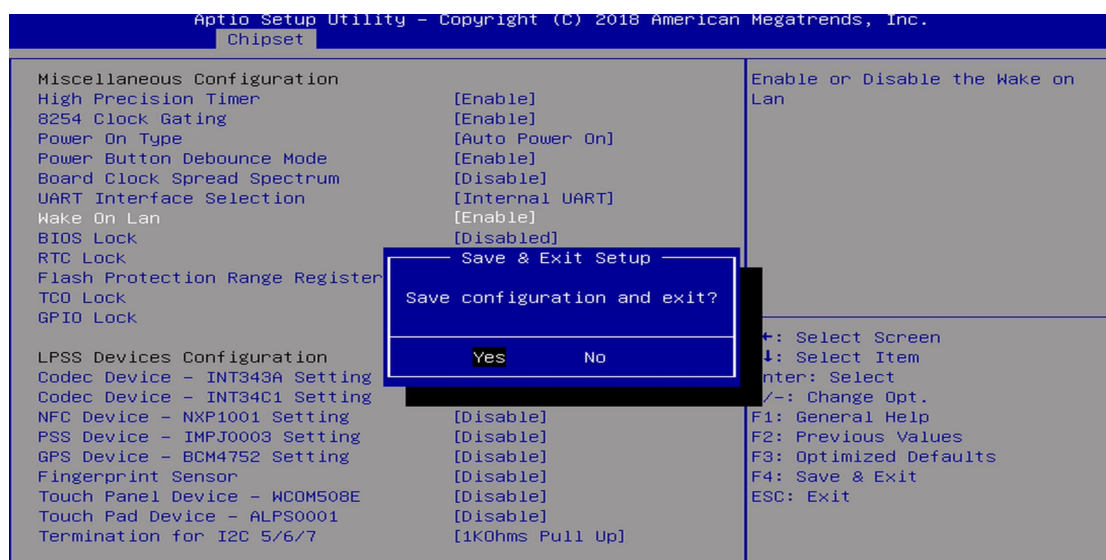
2. Enter to select Miscellaneous Configuration



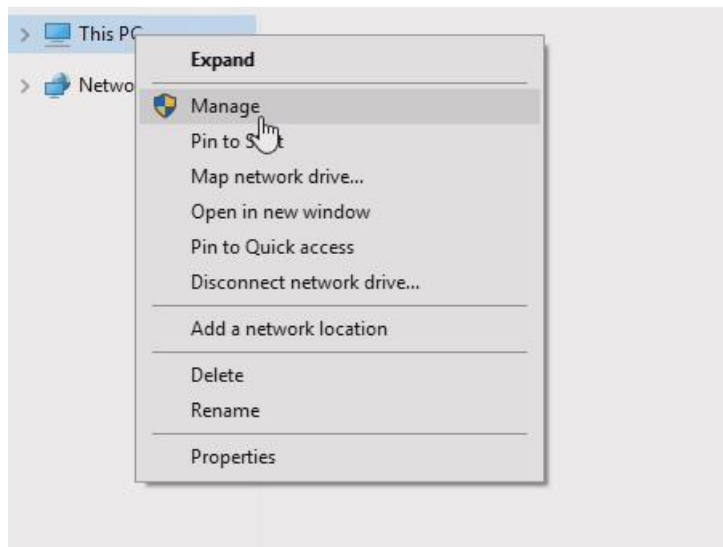
3. Find Wake On Lan and select Enable (note: Disable means disable)



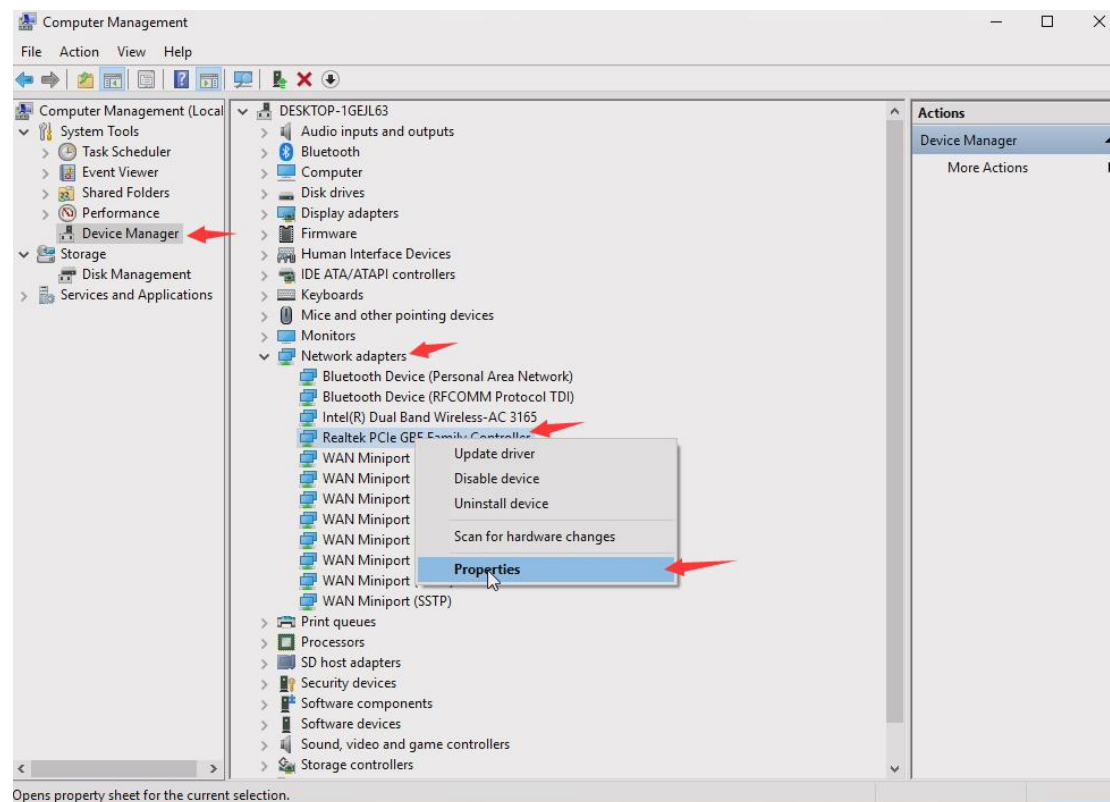
4. Enter, press F4 to select Yes to save the settings and exit, automatically restart into the system.



4. Enter the system desktop, first close the WINDOWS firewall, find my computer This PC, right click Manage Manage



5. Locate Device Management Device Manager, click on Network adapters on the right, select Realtek PCIe GBE Family Controller Properties Realtek NIC Control, right click on Properties Properties



6 . Click Power Management and check Allow this device to wake the computer- allow a magic packet to wake the computer- 2 items - click OK - complete the settings

