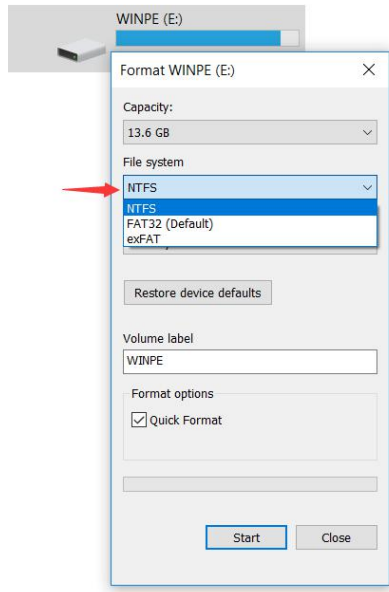
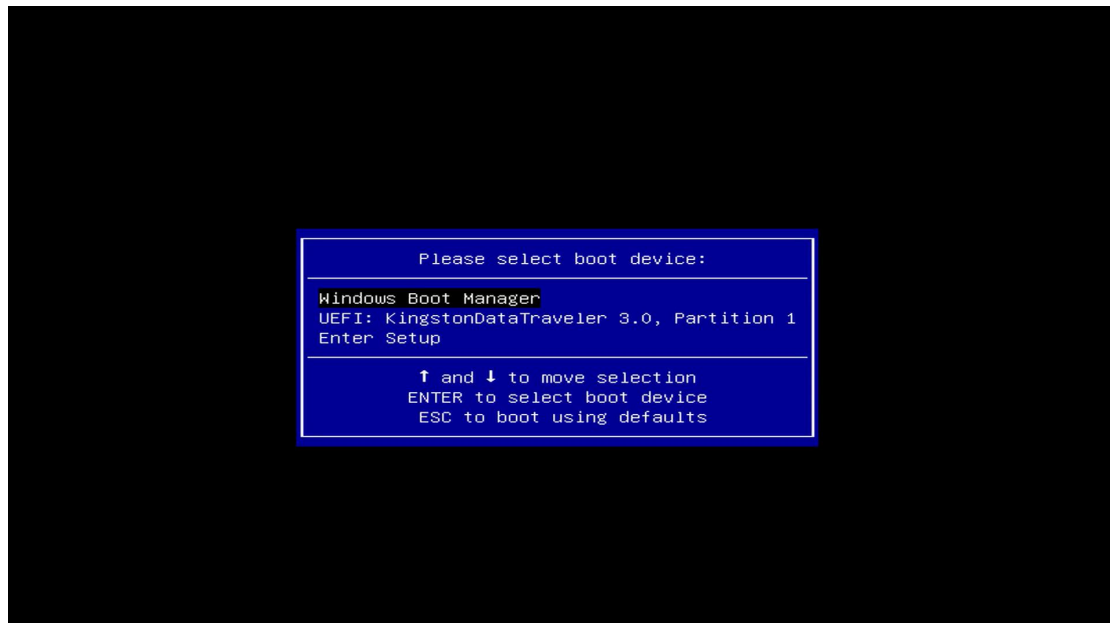


How to install Windows 10?

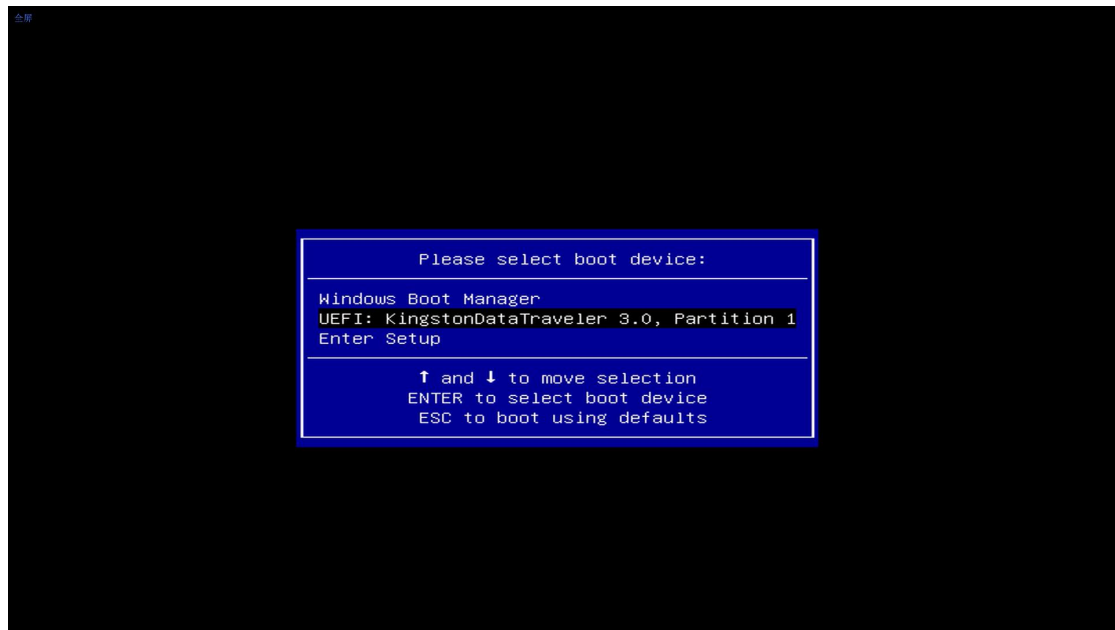
1. Prepare a U disk with a storage capacity of at least 8G
2. Right click and select format... Format U disk to NTFS format, click start to finish formatting



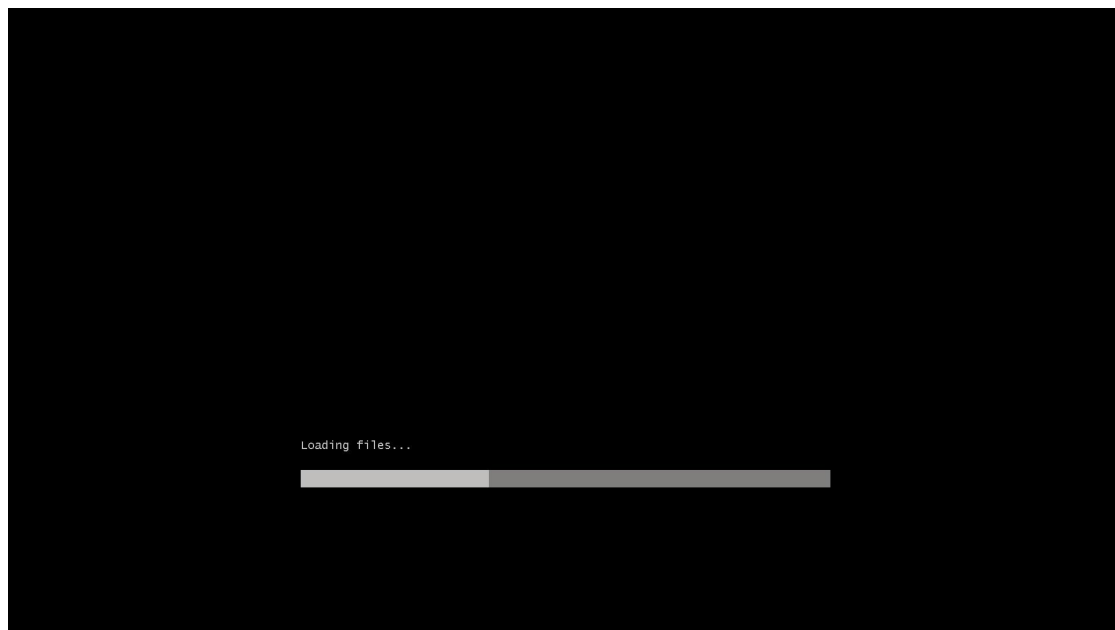
- 3 . Copy your system files to U disk, and it must be in the root directory of U disk.
- 4 . Insert the U disk, boot your mini pc and immediately press F7 repeatedly to enter the boot device menu interface.



5. Select UEFI and press Enter to enter.

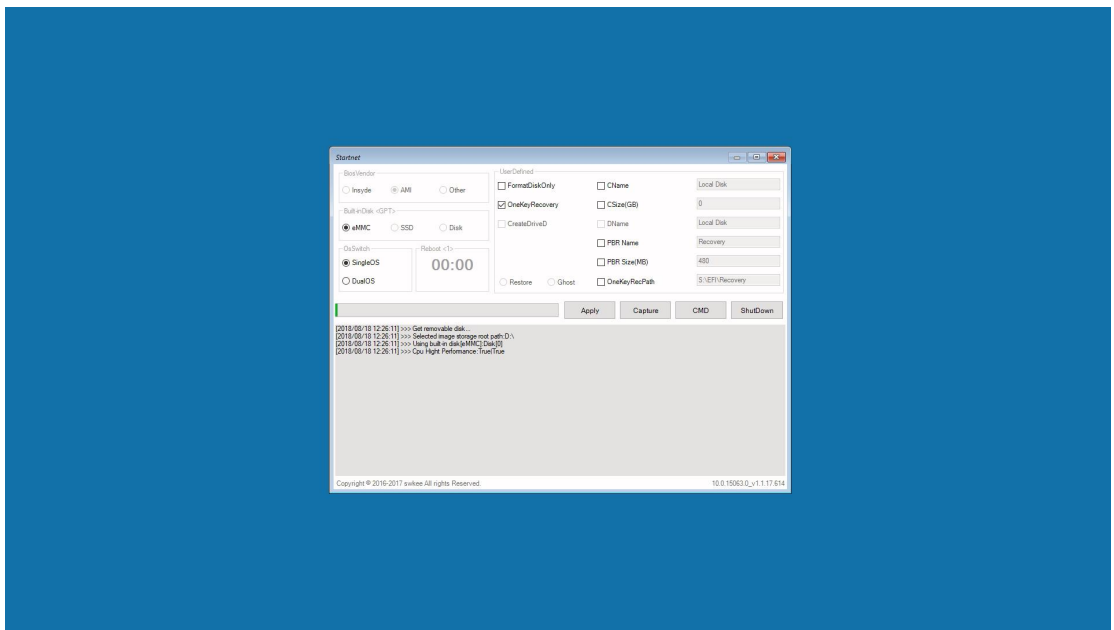


6 . Enter the loading system interface, just wait for automatic loading.





7 . Enter the loading interface, wait for the installation, until 100% complete, will automatically restart immediately (and immediately remove the U disk)



8. Automatic restart into the factory mode interface, the select OK , The machine will restart automatically, enter the system to start setting, after completing your settings, you can use your computer normally.

