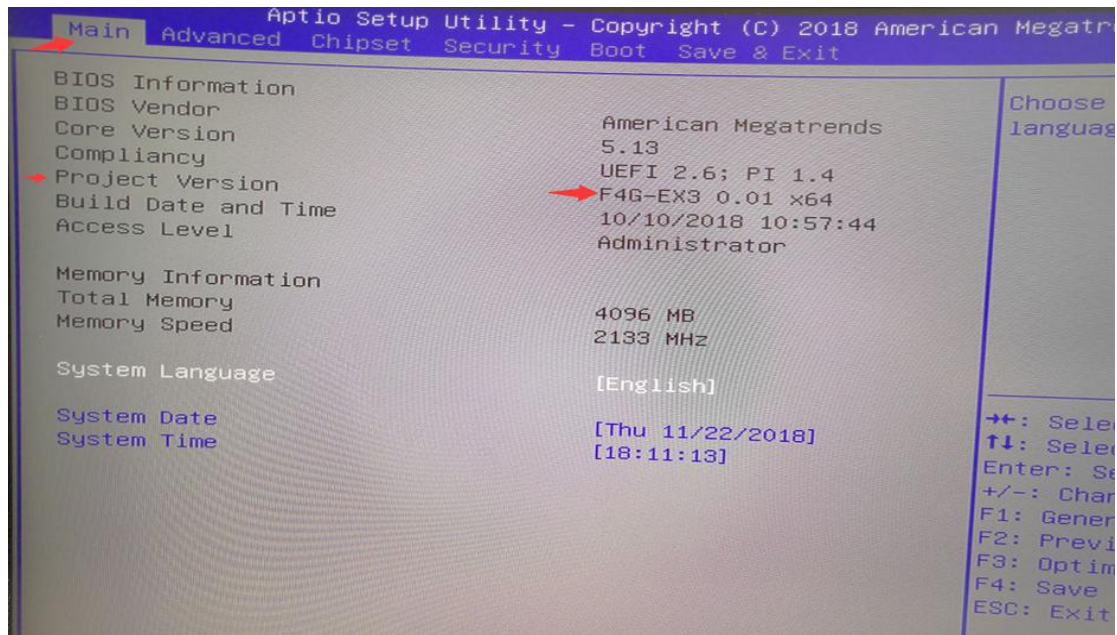


Beelink SII Set power on auto power on function

Note: The BIOS version is: F4G-EX3 0.01 X64 Supports automatic call start function

First of all, you can confirm whether the machine has a jump hardware through the BISO version. Boot, immediately press the Delete button on the keyboard, enter the BIOS interface, find the Project Version on the Main page, the right BIOS version is: F4G-EX3 0.01 X64, confirm that you can set the call to boot

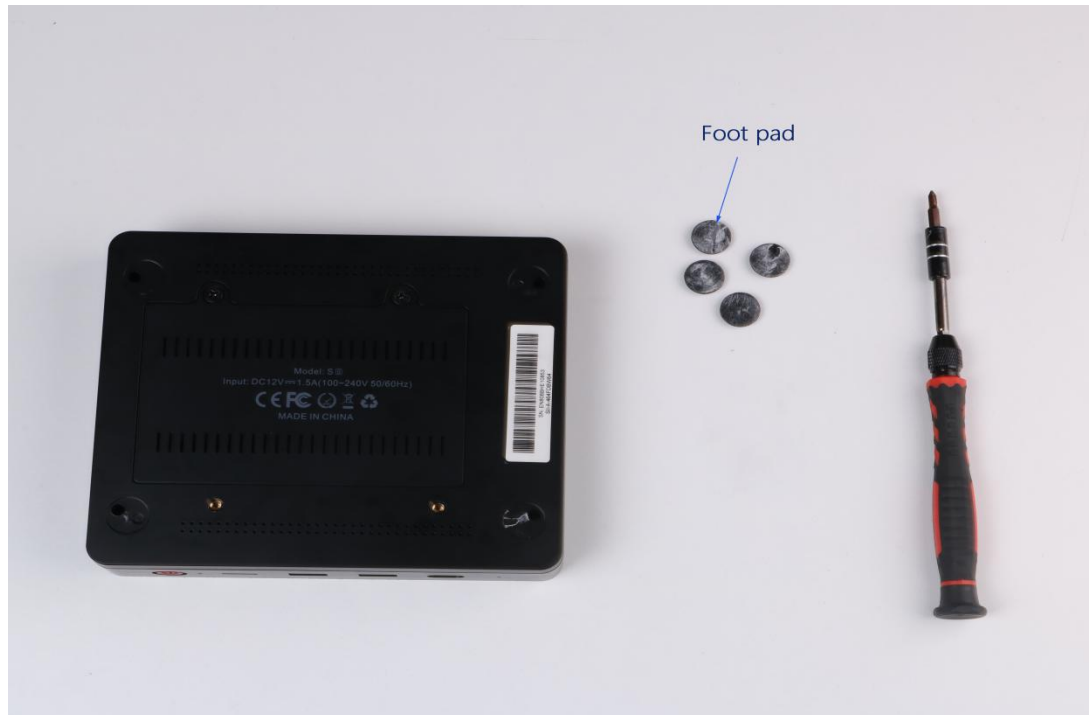


Preparation: Beelink SII machine, screwdriver



The steps are as follows:

1. Remove the plastic gasket at the bottom of the machine



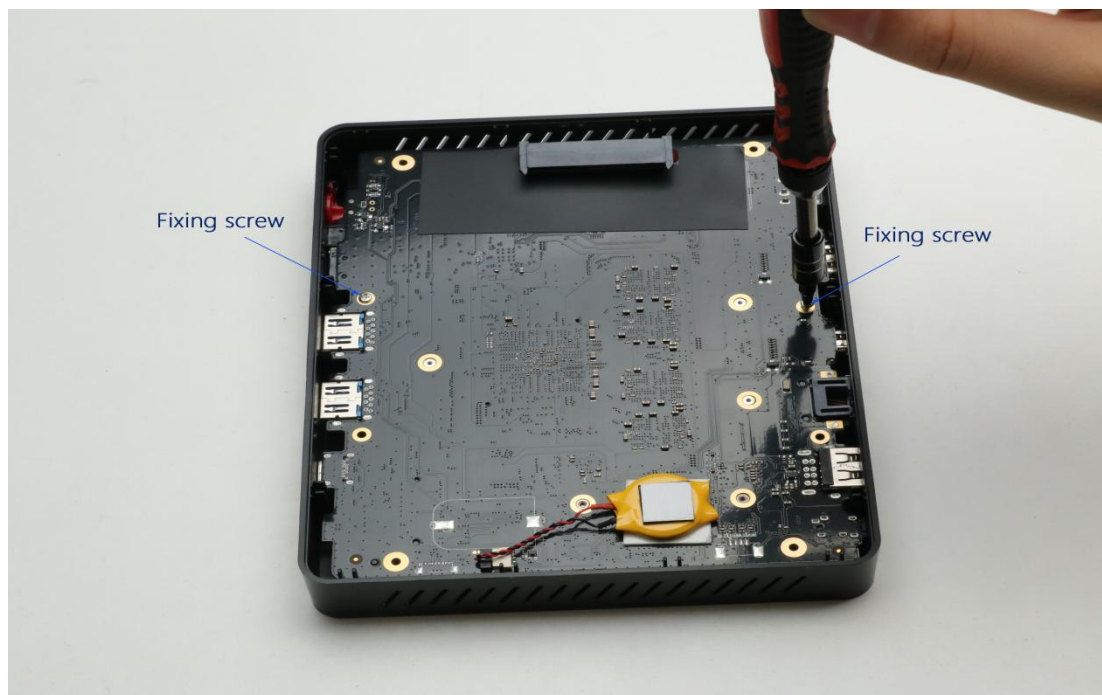
2. use a Phillips screwdriver to remove the bottom four screws



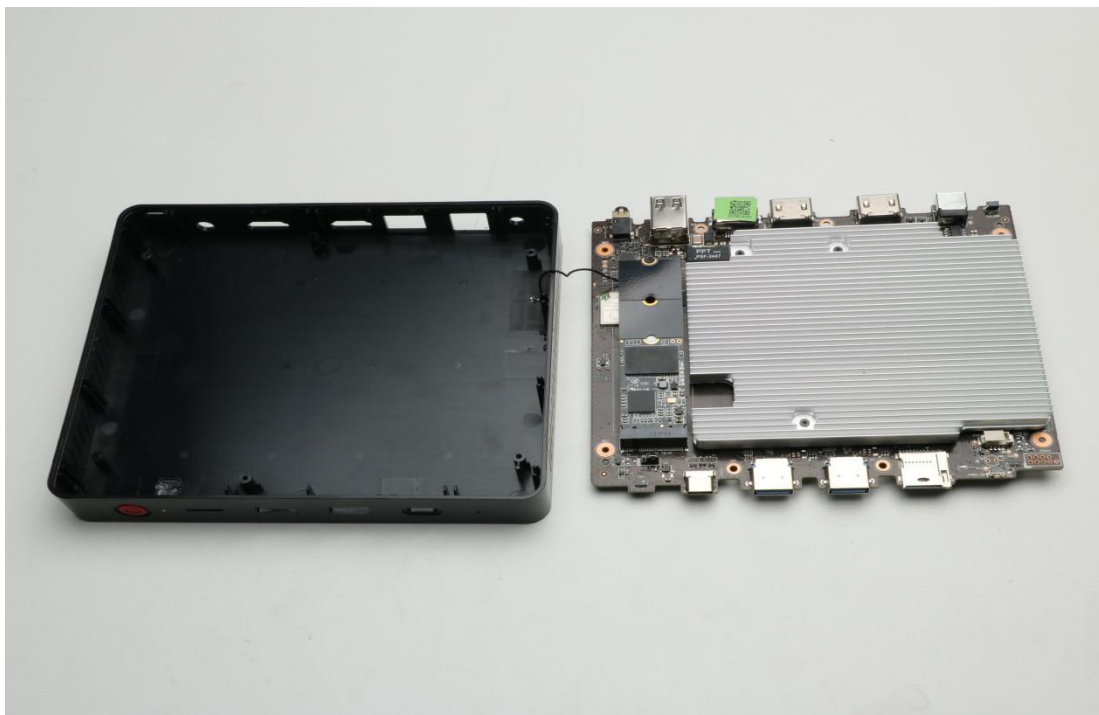
3. Use the disassemble blade to open the case from the side of the start button



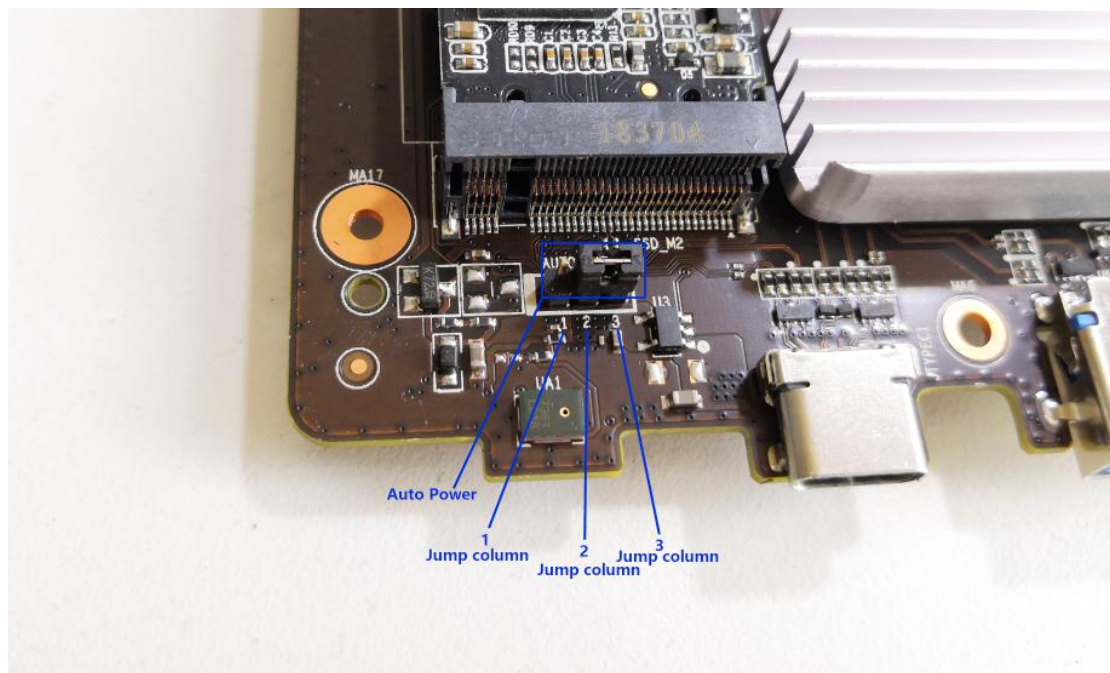
4 , Remove the two fixing screws on the motherboard



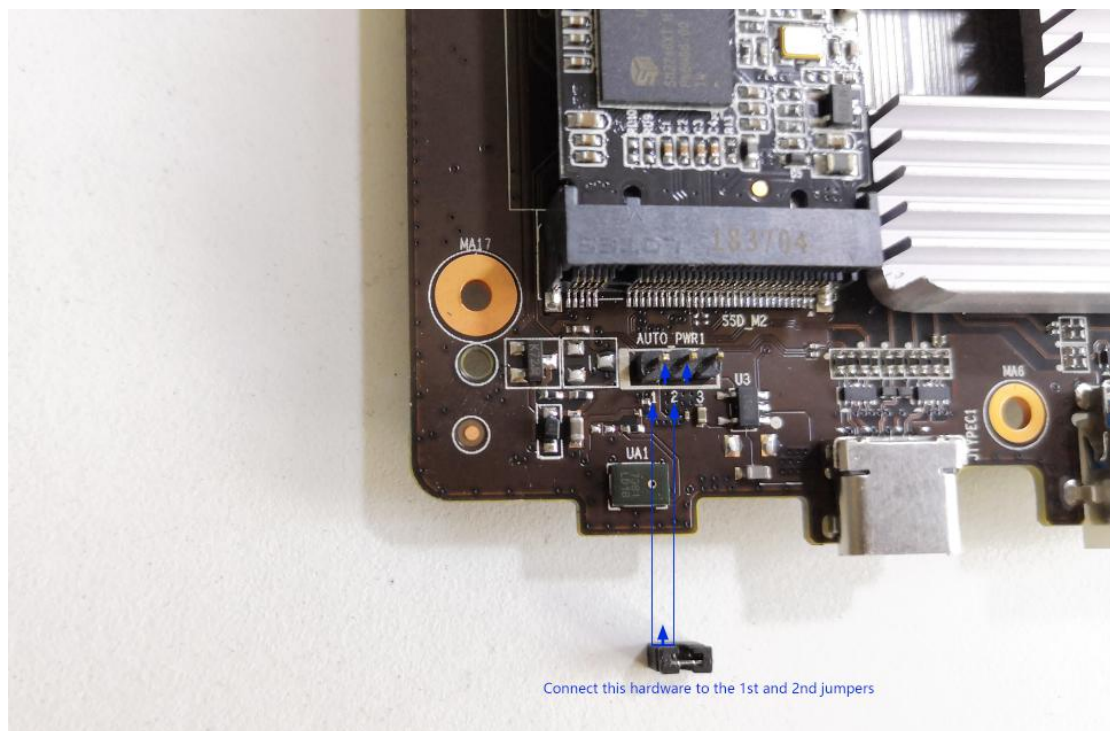
5. Pick up the motherboard from the side of the start button (note: the motherboard is connected to the top case cable)

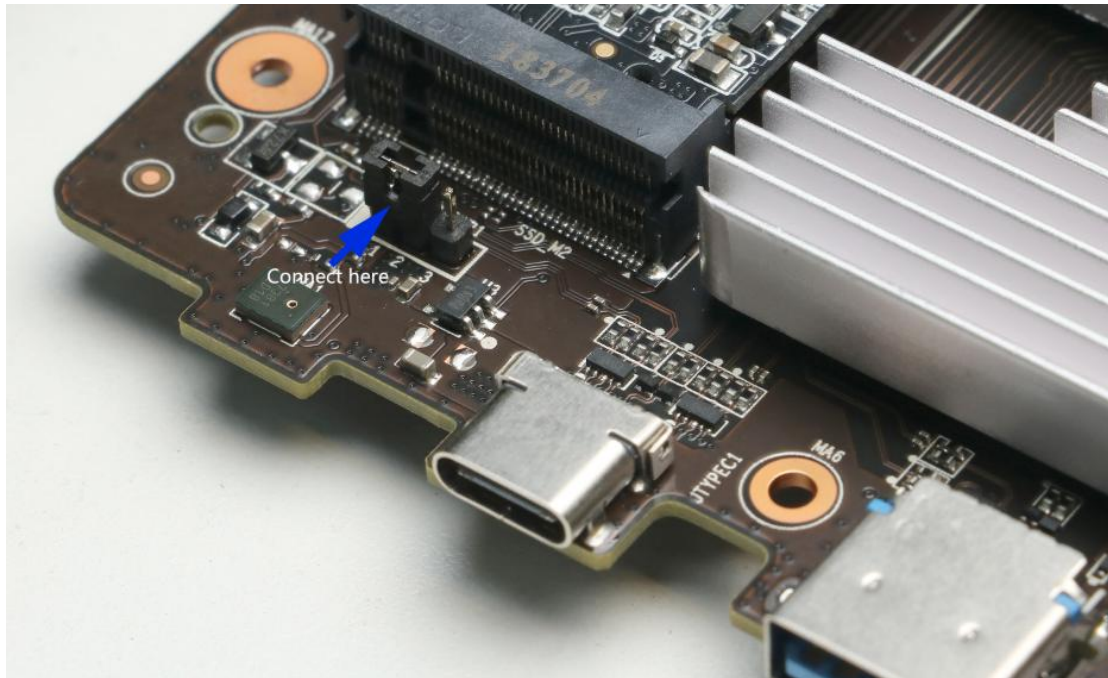


6 , The icon below shows the jumper position set for Auto Power. There are three jumper posts. The default jumper clip connects the jumpers 2 and 3.



7 , Remove the jump hardware and connect to the jumpers 1 and 2 to enable the caller to start.





Reinstall the motherboard, fasten the case, and install the screw pads.
The Beelink S11 call is set up from the start.

More :

Beelink Official : www.bee-link.com

Service email: beelinkservice@bee-link.com

Beelink Youtube: <http://t.cn/RDp97bi>

Beelink Facebook : <https://www.facebook.com/Beelink.fans/>

Beelink Twitter : <https://twitter.com/Beelinkofficial>

Beelink Google+ : <https://plus.google.com/+BeelinkOfficial>

Beelink instagram : https://www.instagram.com/beelink_official/